

Appendix 18-1: Population and Human Health Baseline Information





ORIEL WIND FARM PROJECT

Environmental Impact Assessment Report Appendix 18-1: Population and Human Health Baseline Information

MDR1520B
EIAR Appendix 18-1
A1 C01
March 2024

ORIEL WIND FARM PROJECT – POPULATION AND HUMAN HEALTH BASELINE INFORMATION

Contents

1.	INTRODUCTION	1
2.	DEMOGRAPHY	4
2.1	Population Growth Trends	4
2.2	Age Profile Trends	4
3.	HUMAN HEALTH TRENDS	8
3.1	Republic of Ireland Health Data	8
3.1.1	Life Expectancy	8
3.1.2	Physical Health	9
3.1.3	Mental Health	12
3.1.4	Lifestyle	12
3.1.5	Deprivation	13
3.2	Northern Ireland Health Data	14
3.3	Employment Trends	15
4.	SOCIO-ECONOMIC TRENDS	18
4.1	Affluence and Deprivation Trends	19
5.	AMENITIES, RECREATION AND COMMUNITY FACILITIES	23

Tables

Table 2-1:	Population data and trends in the study areas	4
Table 2-2:	2011 and 2016 age profile for the Construction Local Population Study Area	4
Table 2-3:	2022 age profile for the Construction Local Population Study Area	5
Table 2-4:	Age profile for County Louth	5
Table 2-5:	Age profile for the State	6
Table 2-6:	Age profile of Northern Ireland, Mourne and Down	6
Table 3-1:	Northern Ireland health baseline indicators	14
Table 3-2:	Employment trends and principal economic status	16
Table 3-3:	Persons Aged 15 Years and Over Classified by Economic Status	17
Table 3-4:	Northern Ireland unemployment rate	17
Table 4-1:	Percentage in employment by industry sector, age 16 and over (Northern Ireland)	18
Table 4-2:	Northern Ireland and Newry Mourne and Down Multiple Deprivation Measure 2017	22
Table 5-1:	Sports facilities within the Operational Local Population Study Area	23
Table 5-2:	Childcare facilities within the Operational Local Population Study Area	25
Table 5-3:	Primary schools within the Operational Local Population Study Area	28
Table 5-4:	Secondary schools within the Operational Local Population Study Area	32
Table 5-5:	Sports facilities within the Construction Local Population Study Area	32
Table 5-6:	Childcare Facilities within the Construction Local Population Study Area	33
Table 5-7:	Primary schools within the Construction Local Population Study Area	33
Table 5-8:	Secondary schools within the Construction Local Population Study Area	34
Table 5-9:	Hospitals within the Wider Population Study Area	34

Figures

Figure 1-1:	Population Study Areas	2
Figure 1-2:	Human Health Study Area	3
Figure 3-1:	Life expectancy for Ireland	8
Figure 3-2:	Healthy life expectancy	9

ORIEL WIND FARM PROJECT – POPULATION AND HUMAN HEALTH BASELINE INFORMATION

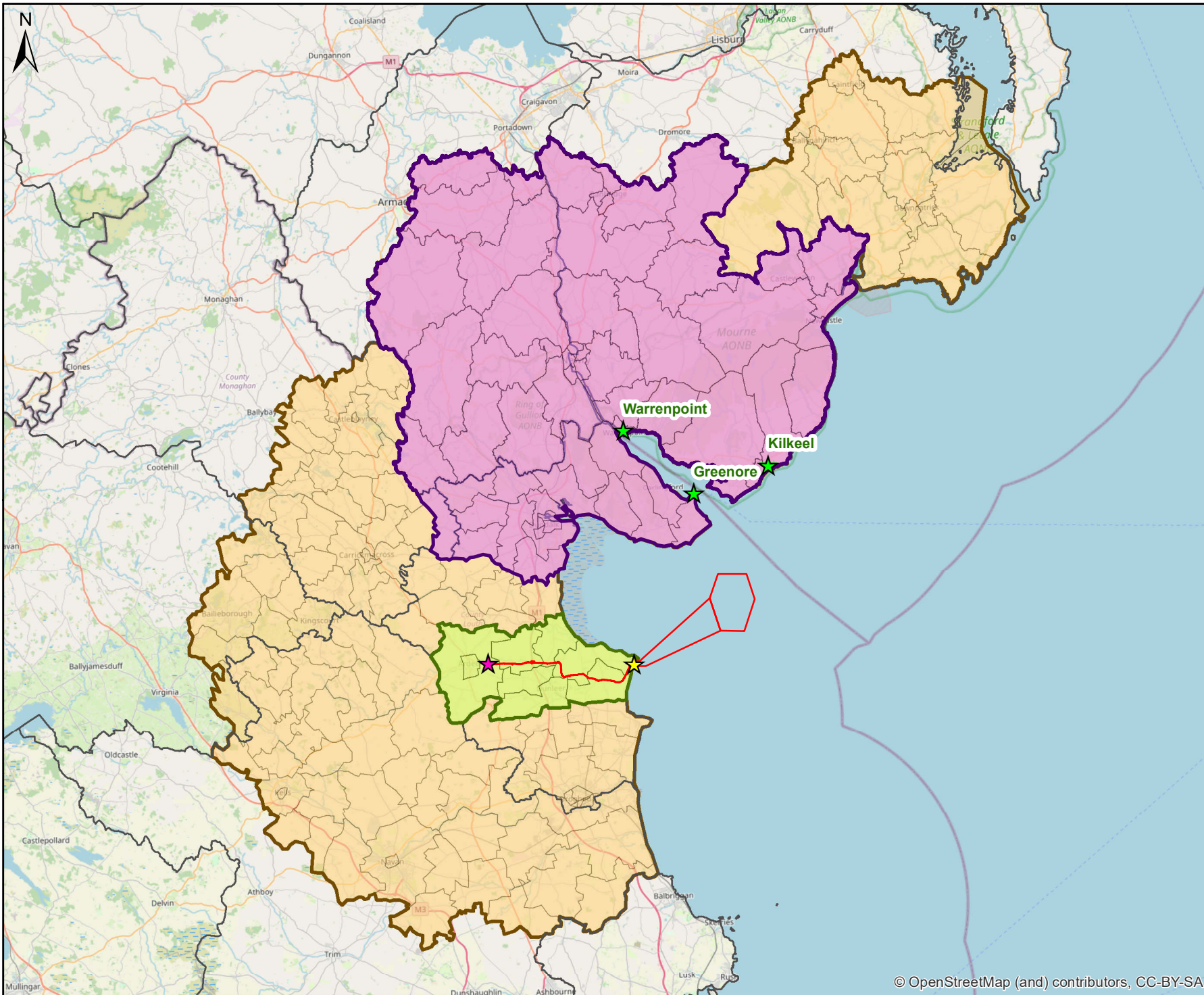
Figure 3-3: All-age all-cause mortality rate.....	10
Figure 3-4: Circulatory disease mortality rate.....	10
Figure 3-5: Respiratory disease mortality rate.	11
Figure 3-6: Cancer mortality rate.....	11
Figure 3-7: Suicide and intentional self-harm death rates in County Louth.	12
Figure 3-8: Behavioural risk factors in Ireland.....	13
Figure 3-9: Physical inactivity in Ireland.	13
Figure 3-10: Employment trends in 2016.	16
Figure 4-1: Employment in 2016 based on socio-economic grouping.	18
Figure 4-2: Deprivation Index in the Construction Local Population Study Area.	20
Figure 4-3: Deprivation Trends in the Wider Population Study Area (within Republic of Ireland).....	21

1. INTRODUCTION

The purpose of this report is to provide information on the population and health baseline and to put into context the local health and socio-economic circumstance of the communities surrounding the Oriel Wind Farm Project (hereafter referred to as “the Project”), drawing from available statistics.

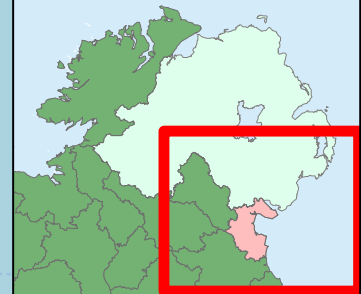
For the purposes of the population-specific assessment, the baseline data collection contrasts data for the Construction Local Population Study Area, Operational Local Population Study Area and the Wider Population Study Area. The Construction Local Population Study Area includes 8 no. electoral districts (Eds) within County Louth. The Operational Local Population Study Area includes areas with County Louth, County Armagh, and County Down. The Wider Population Study Area includes County Louth, Newry Mourne and Down District Council, parts of Armagh City, Banbridge and Craigavon Borough Council, and areas within Counties Monaghan, Meath and Cavan. These study areas are shown in Figure 1-1.

For the purposes of the health-specific assessment, the baseline data collection for the Human Health Study Area compares and contrasts data for County Louth relative to that of the State (Ireland), and data for Kilkeel (represented by The Mourne_P super data zone) and Warrenpoint (represented by Crotlieve_K super data zone) relative to that of Northern Ireland. Deprivation data has been collected for the most deprived small areas (Ireland) and Super Output Areas (SOAs) (Northern Ireland) located close to the Project. Figure 1-2 shows the Human Health Study Area.



- Legend**
- Planning Application Boundary
 - ★ Onshore Substation Site
 - ★ Landfall Location
 - ★ Ports
 - Operational Local Population Study Area
 - Construction Local Population Study Area
 - Wider Population Study Area

Data Sources: OWL, CSO, OSI, OSNI



Client



ORIEL WIND FARM
OFFSHORE RENEWABLE ENERGY

Project

Oriel Wind Farm Project

Title

**Figure 1-1
Population Study Areas**



RPS
A TETRA TECH COMPANY

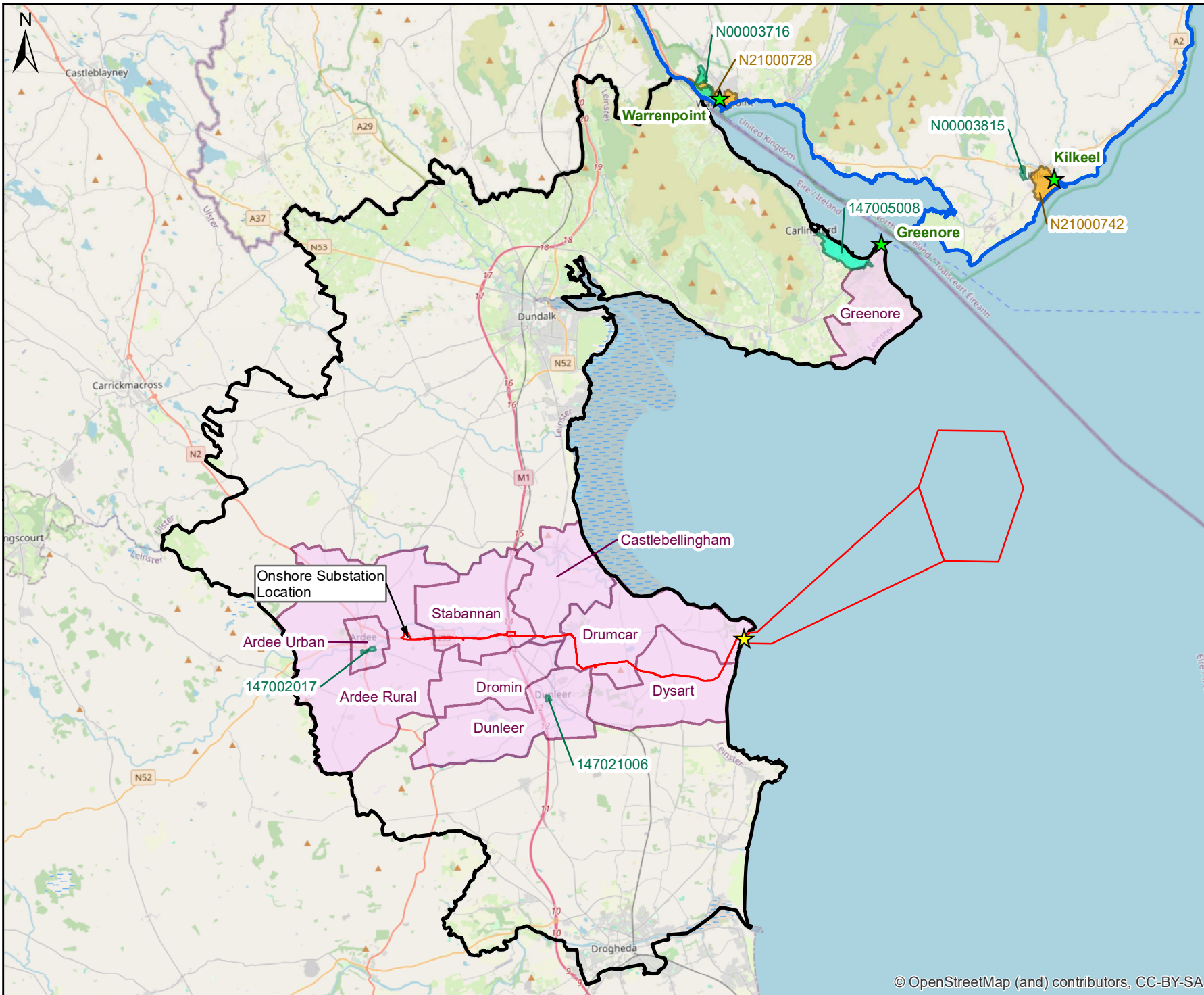
West Pier Business Campus,
Dun Laoghaire,
Co Dublin,
Ireland.

Tel: +353 (0) 1 4882900
Email: ireland@rpsgroup.com
Web Page: rpsgroup.com/ireland

Issue Details

Drawn By: NR	Project No. MDR1520b
Checked By: MH	File Ref:
Approved By: CC	MDR1520bArc3032F01
Scale: 1:600,000 @A4	Projection: ITM (IRENET95) Geographic Co-ordinates: ETRS89
DATE: 06/03/2024	

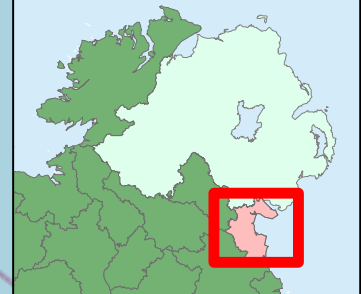
NOTE: 1. This drawing is the property of RPS Group Ltd. It is a confidential document and must not be copied, used, or its contents divulged without prior written consent.
2. All levels are referred to Ordnance Datum, Malin Head.
3. ©Tallie Eireann. All rights reserved. Licence number CYAL5536216



Legend

- Planning Application Boundary
- ★ Ports
- ★ Landfall Location
- Small Area Boundaries
- Electoral Division Boundaries
- Super Data Zones
- Louth County Boundary
- Down County Boundary

Data Sources: OWL, CSO, NINIS



Client



Project

Oriel Wind Farm Project

Title

**Figure 1-2:
Human Health Study Area**



West Pier Business Campus,
Dun Laoghaire,
Co Dublin,
Ireland.

Tel: +353 (0) 1 4882900
Email: ireland@rpsgroup.com
Web Page: rpsgroup.com/ireland

Issue Details	
Drawn By: NR	Project No. MDR1520b
Checked By: EP	File Ref:
Approved By: CC	MDR1520bArc3065F01
Scale: 1:260,000 @A4	Projection: ITM (IRENET95) Geographic Co-ordinates: ETRS89
Date: 05/03/2024	

NOTE: 1. This drawing is the property of RPS Group Ltd. It is a confidential document and must not be copied, used, or its contents divulged without prior written consent.
2. All levels are referred to Ordnance Datum, Malin Head.
3. ©Tallie Eireann. All rights reserved. Licence number CVAL55362 16

ORIEL WIND FARM PROJECT – POPULATION AND HUMAN HEALTH BASELINE INFORMATION

2. DEMOGRAPHY

2.1 Population Growth Trends

Table 2-1 sets out the population growth trends in the Republic of Ireland, Northern Ireland, Operational Local Population Study area, Construction Local Population Study area and the Wider Population Study Area over a 11-year period from 2011 to 2022. Between 2011 and 2022, the rate of population growth in the Operational Local Population Study Area, and Construction Local Population Study Area has been greater than that of the level of growth within the Republic of Ireland, and all three study areas are greater than the level of population growth within Northern Ireland.

Table 2-1: Population data and trends in the study areas.

Study Area	2011	2016	2021/2022	% change 2011 - 2022
Northern Ireland ¹	1,810,863		1,903,175	13%
Republic of Ireland	4,588,252	4,761,865	5,123,536	21%
Operational Local Population Study Area ²	230,805		291,550	26%
Construction Local Population Study Area	15,516	16,041	17,444	12%
Wider Population Study Area ³	466,203		536,676	15.1%

Source: CSO 2022 Population, SAPMAP 2011, SAPMAP 2016, NISRA 2011, NISRA 2021.

2.2 Age Profile Trends

The age profile trends of the population of the Construction Local Population Study Area, County Louth and the State are set out in Tables Table 2-2 to Table 2-5 below.

Table 2-2: 2011 and 2016 age profile for the Construction Local Population Study Area.

Age profile	2011	2016	% change 2011-2016
Persons aged 0-4 years	8.0%	7.4%	0.7%
Persons aged 5-12 years	12.0%	12.5%	-0.5%
Persons aged 13-18 years	7.4%	8.4%	-0.9%
Persons aged 19-24 years	6.8%	5.7%	1.0%
Persons aged 25-44 years	30.9%	27.9%	3.0%
Persons aged 45-64 years	22.8%	24.7%	-1.9%
Persons aged 65-69 years	3.9%	4.3%	-0.4%

¹ Northern Ireland census data is gathered at 10 year intervals. In this instance data gathered in 2011, and 2021 has been used.

² Northern Ireland census data is gathered at 10 year intervals. In this instance data gathered in 2011 for NI has been used due to the unavailability of 2021 data at local level at the time of writing.

³ Northern Ireland census data is gathered at 10 year intervals. In this instance data gathered in 2011 for NI has been used for the following district electoral areas: Cushier and Banbridge and the following ward: Gransha. 2021 NI data for Newry Mourne and Down District Council was also used.

ORIEL WIND FARM PROJECT – POPULATION AND HUMAN HEALTH BASELINE INFORMATION

Age profile	2011	2016	% change 2011-2016
Persons aged 70 years and over	8.3%	9.3%	-1.0%

Source: CSO.

As illustrated in Table 2-4 and Table 2-5, age structure in County Louth shows a higher proportion of the population in the 0 to 19 and 40 to 49 age categories when compared to the Ireland average. Within County Louth, there is a lower proportion of the population who fall in the 20 to 34 age category and are aged 50+ when compared to the Ireland average.

Table 2-3: 2022 age profile for the Construction Local Population Study Area.

Age profile	Construction Study Area 2022	% of total population
Persons aged 0-17 years	4,394	25.1%
Persons aged 18-19 years	430	2.4%
Persons aged 20-29 years	1,776	10.1%
Persons aged 30-39 years	2,212	12.3%
Persons aged 40-49 years	2,624	13%
Persons aged 50-59 years	2,430	13.9%
Persons aged 60-64 years	916	5.2%
Persons aged 70 years and over	1,163	6.7%
Total Population	17,444	100%

Table 2-4: Age profile for County Louth.

Age profile	Louth 2011	Louth 2016	Louth 2022	% change 2011-2022
Persons aged 0-4 years	8.50%	7.40%	5.9%	-2.6%
Persons aged 5-9 years	7.70%	8.10%	7.0%	-0.7%
Persons aged 10-14 years	7.10%	7.50%	7.7%	0.6%
Persons aged 15-19 years	6.20%	6.60%	7.1%	0.9%
Persons aged 20-24 years	6.40%	5.50%	6.0%	-0.4%
Persons aged 25-29 years	7.30%	5.90%	5.1%	-2.2%
Persons aged 30-34 years	8.10%	7.20%	6.0%	-2.1%
Persons aged 35-39 years	8.10%	8.00%	7.1%	-1.0%
Persons aged 40-44 years	7.60%	7.70%	8.0%	0.4%
Persons aged 45-49 years	6.70%	7.20%	7.3%	0.6%
Persons aged 50-54 years	5.70%	6.30%	7.0%	1.3%
Persons aged 55-59 years	5.10%	5.40%	6.0%	0.9%
Persons aged 60-64 years	4.50%	4.70%	5.0%	0.5%
Persons aged 65-69 years	3.70%	4.20%	4.3%	0.6%
Persons aged 70-74 years	2.70%	3.30%	3.7%	1.0%
Persons aged 75-79 years	2.00%	2.30%	2.9%	0.9%

ORIEL WIND FARM PROJECT – POPULATION AND HUMAN HEALTH BASELINE INFORMATION

Age profile	Louth 2011	Louth 2016	Louth 2022	% change 2011-2022
Persons aged 80-84 years	1.40%	1.50%	1.8%	0.4%
Persons aged 85 +	1.20%	1.20%	1.4%	0.2%

Source: CSO.

Table 2-5: Age profile for the State.

Age Profile	State 2011	State 2016	State 2022	% change 2011-2022
Persons aged 0-4 years	7.70%	7.00%	5.70%	-2%
Persons aged 5-9 years	7.00%	7.50%	6.70%	-0.30%
Persons aged 10-14 years	6.60%	6.70%	7.20%	0.60%
Persons aged 15-19 years	6.20%	6.40%	6.60%	0.40%
Persons aged 20-24 years	6.50%	5.70%	6%	-0.50%
Persons aged 25-29 years	7.70%	6.20%	5.70%	-0.20%
Persons aged 30-34 years	8.60%	7.60%	6.40%	-2.20%
Persons aged 35-39 years	7.90%	8.20%	7.40%	-0.50%
Persons aged 40-44 years	7.20%	7.50%	8%	0.80%
Persons aged 45-49 years	6.70%	6.80%	7.20%	0.50%
Persons aged 50-54 years	6.00%	6.30%	6.60%	0.60%
Persons aged 55-59 years	5.30%	5.70%	6%	0.70%
Persons aged 60-64 years	4.80%	5.00%	5.20%	0.40%
Persons aged 65-69 years	3.80%	4.40%	4.60%	0.80%
Persons aged 70-74 years	2.90%	3.40%	3.90%	1%
Persons aged 75-79 years	2.20%	2.40%	3%	0.80%
Persons aged 80-84 years	1.50%	1.70%	1.80%	0.30%
Persons aged 85 +	1.30%	1.40%	1.60%	0.30%

Source: CSO.

The age profile trends of the population of Northern Ireland and Newry, Mourne and Down are set out in Table 2-6.

Table 2-6: Age profile of Northern Ireland, Mourne and Down.

Age Group	Newry, Mourne and Down (Total 2011)	Newry, Mourne and Down (Total 2021)	Newry, Mourne and Down (% Change)	Northern Ireland (Total 2011)	Northern Ireland (Total 2021)	Northern Ireland (% Change)
0-4 years	12,721	11,722	-7.85%	124,382	113,820	-8.49%
5-9 Years	11,471	12,951	12.90%	111,287	124,475	11.85%
10-14 years	12,287	13,151	7.03%	119,034	126,918	6.62%
15-19 years	12,429	11,201	-9.88%	126,241	113,203	-10.33%
20-24 years	11,570	10,022	-13.38%	126,013	111,386	-11.61%
25-29 years	11,805	10,354	-12.29%	124,099	116,409	-6.20%
30-34 years	11,021	11,334	2.84%	119,839	126,050	5.18%
35-39 years	11,563	11,876	2.71%	122,260	127,313	4.13%

ORIEL WIND FARM PROJECT – POPULATION AND HUMAN HEALTH BASELINE INFORMATION

Age Group	Newry, Mourne and Down (Total 2011)	Newry, Mourne and Down (Total 2021)	Newry, Mourne and Down (% Change)	Northern Ireland (Total 2011)	Northern Ireland (Total 2021)	Northern Ireland (% Change)
40-44 years	12,538	11,761	-6.20%	131,848	122,163	-7.35%
45-49 years	12,402	11,583	-6.60%	131,645	121,670	-7.58%
50-54 years	10,767	12,609	17.11%	116,933	130,967	12.00%
55-59 years	9,387	12,423	32.34%	99,272	129,276	30.22%
60-64 years	8,624	10,758	24.74%	94,290	113,049	19.90%
65-69 years	7,219	9,138	26.58%	82,121	93,464	13.81%
70-74 years	5,598	7,782	39.01%	63,479	83,467	31.49%
75-79 years	4,417	5,992	35.66%	50,358	66,377	31.81%
80-84 years	3,036	3,880	27.80%	36,366	43,776	20.38%
85-89 years	1,849	2,347	26.93%	21,165	25,879	22.27%
90+ years	829	1,189	43.43%	10,231	13,512	32.07%

Source: NISRA.

3. HUMAN HEALTH TRENDS

3.1 Republic of Ireland Health Data

3.1.1 Life Expectancy

Life expectancy statistics are only available at the national (Ireland) level; both male and female life expectancy is increasing with male life expectancy consistently lower than female life expectancy. Figure 3-1 illustrates life expectancy for Ireland.

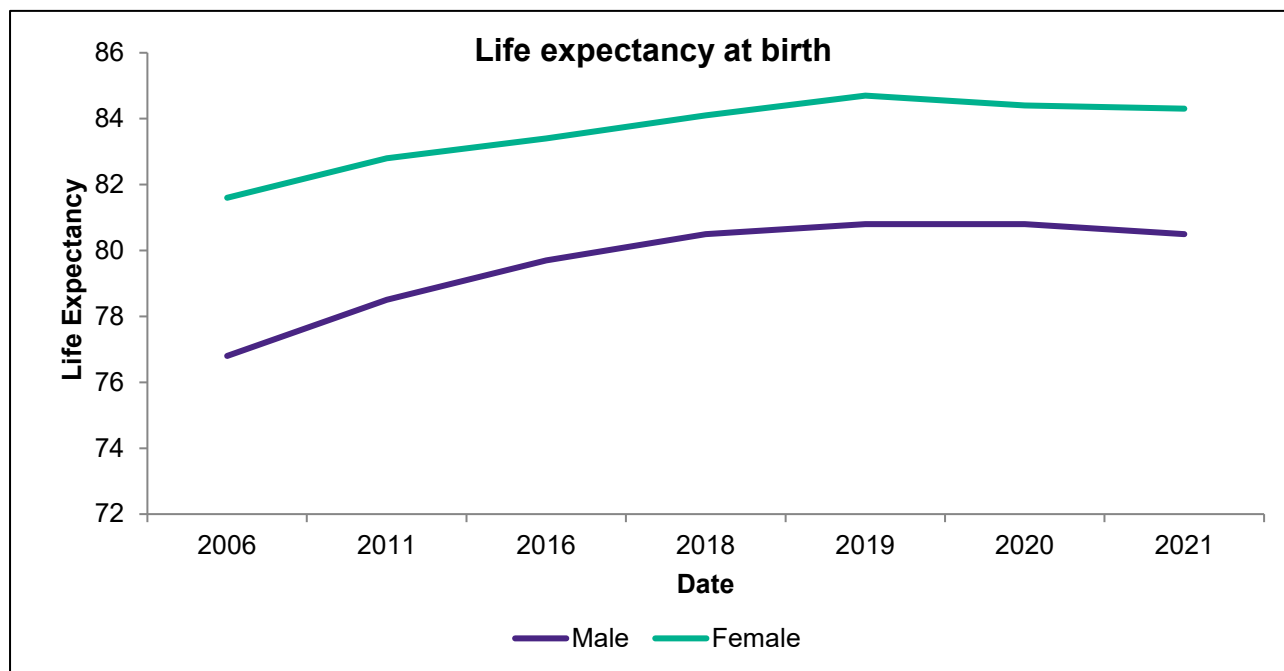


Figure 3-1: Life expectancy for Ireland.

Source: Statbank (Table VSA30).

Healthy life expectancy (HLE) statistics (i.e. the number of years a person is in good health), as illustrated in Figure 3-2, are also only available at the national (Ireland) level. Generally, both male and female HLE are increasing, with male HLE also consistently lower than female HLE.

ORIEL WIND FARM PROJECT – POPULATION AND HUMAN HEALTH BASELINE INFORMATION

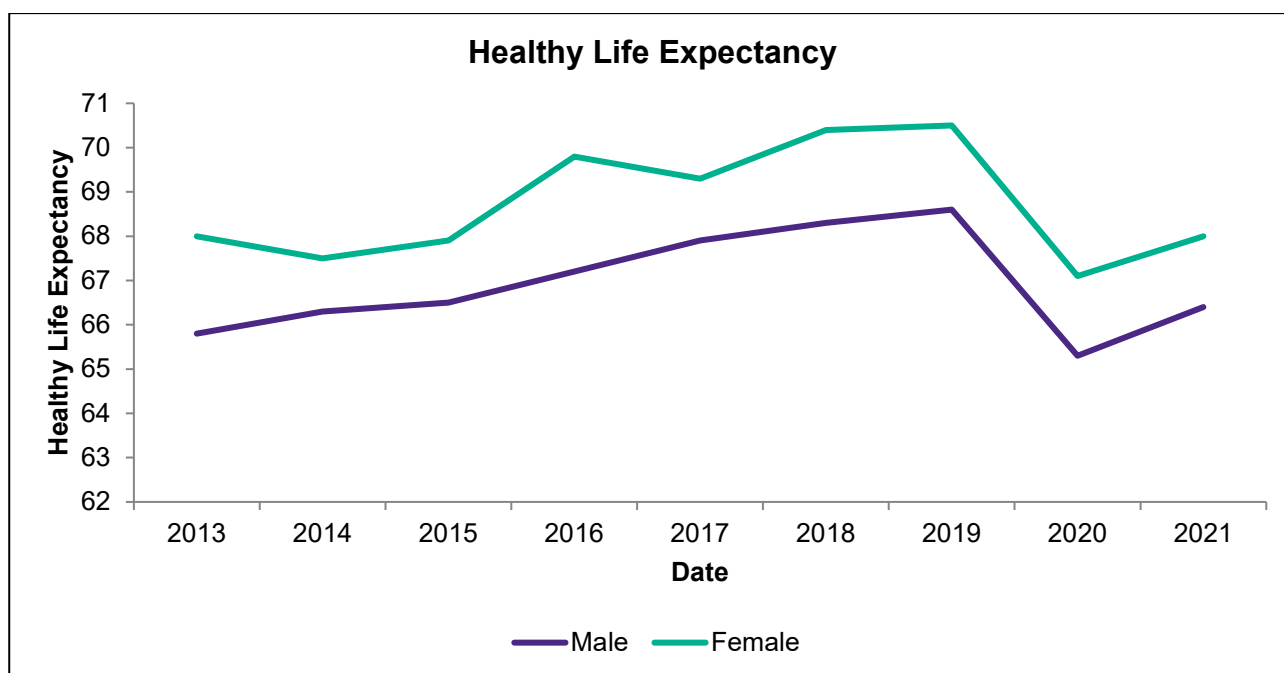


Figure 3-2: Healthy life expectancy.

Source: Eurostat.

3.1.2 Physical Health

Overall, the all-age all-cause mortality rate in County Louth is lower than the Ireland average (see Figure 3-3 below). As shown in Figure 3-4, mortality rate from circulatory diseases within County Louth is consistently lower than the Ireland average and indicates a decreasing trend. Mortality rate from respiratory diseases (Figure 3-5) within County Louth has fluctuated over the years whereas the Ireland average has been decreasing more steadily; most recent statistics show a decreasing trend; however the County Louth average remains above the Ireland average. Mortality rate from cancer (Figure 3-6) has fluctuated over the years within County Louth. There has been a decreasing trend from 2019 to 2021, where most recent statistics (2021) show a lower mortality rate within County Louth compared to the Ireland average.

ORIEL WIND FARM PROJECT – POPULATION AND HUMAN HEALTH BASELINE INFORMATION

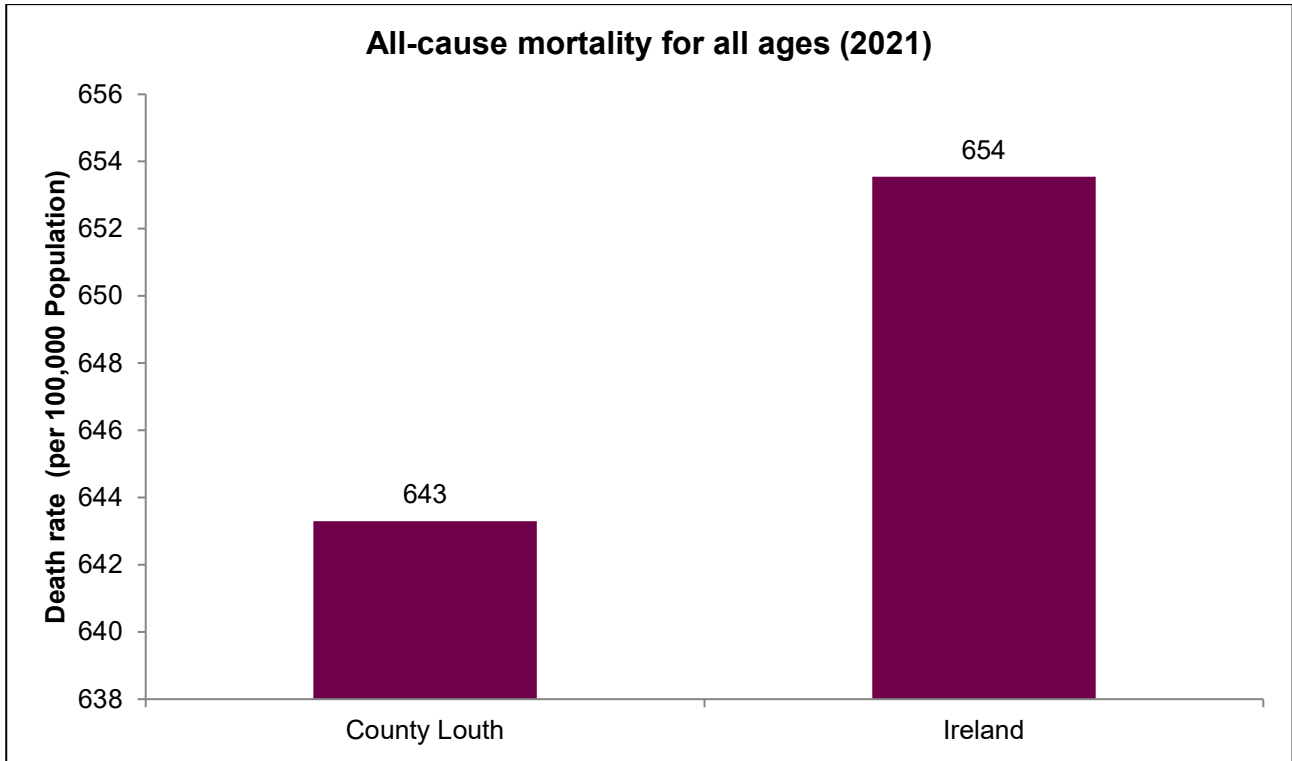


Figure 3-3: All-age all-cause mortality rate.

Source: Statbank (Table DHA12).

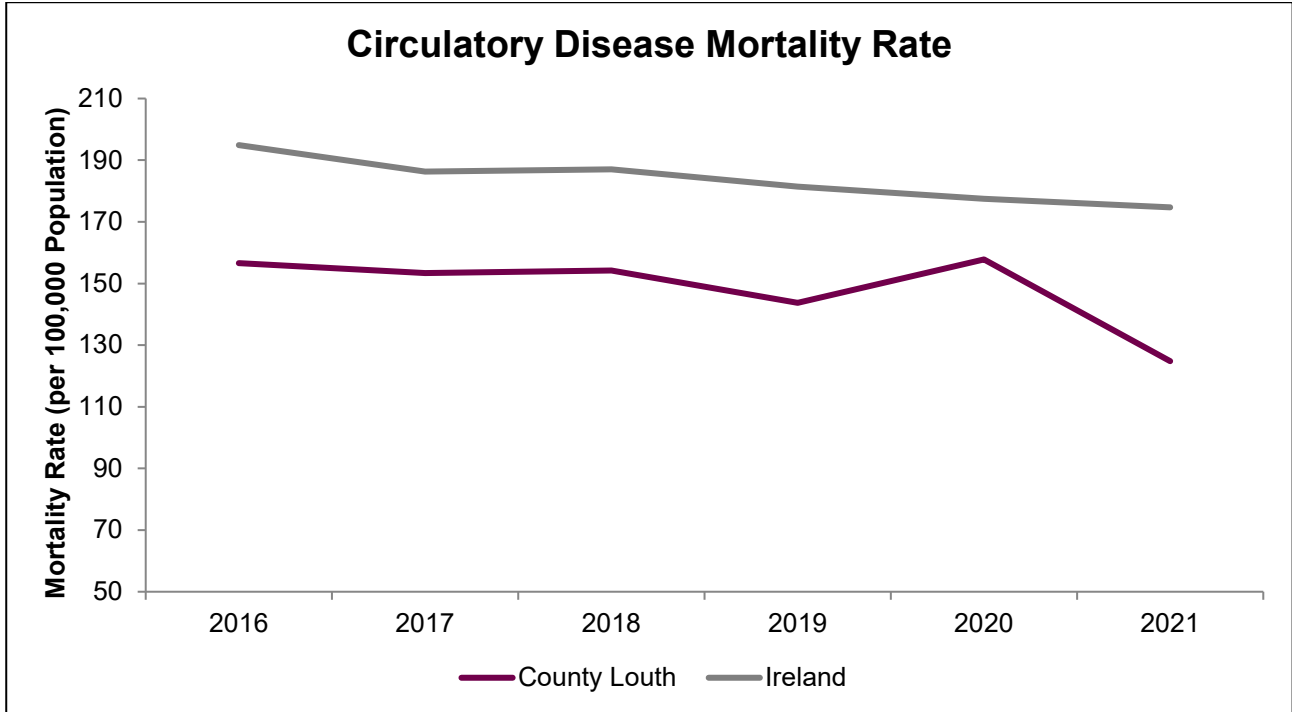


Figure 3-4: Circulatory disease mortality rate.

Source: Statbank (Table DHA12).

ORIEL WIND FARM PROJECT – POPULATION AND HUMAN HEALTH BASELINE INFORMATION

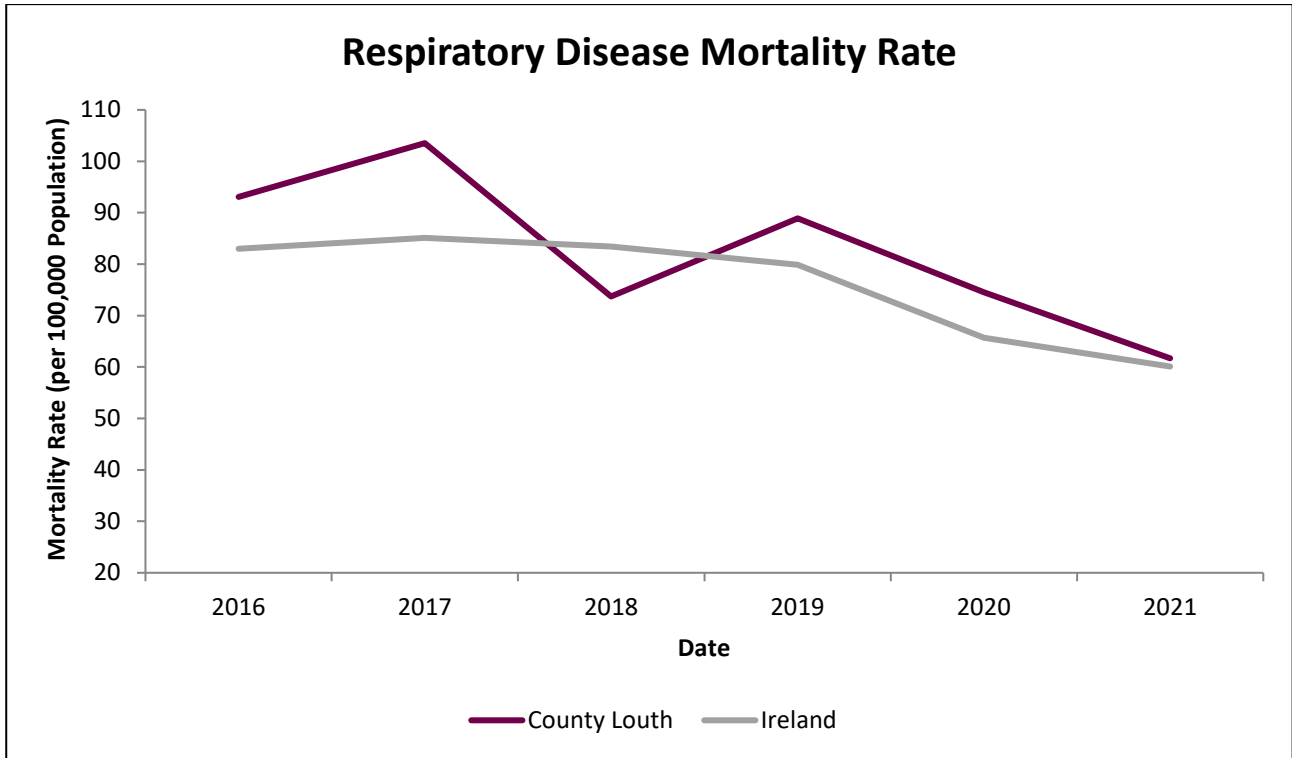


Figure 3-5: Respiratory disease mortality rate.

Source: Statbank (Table DHA12).

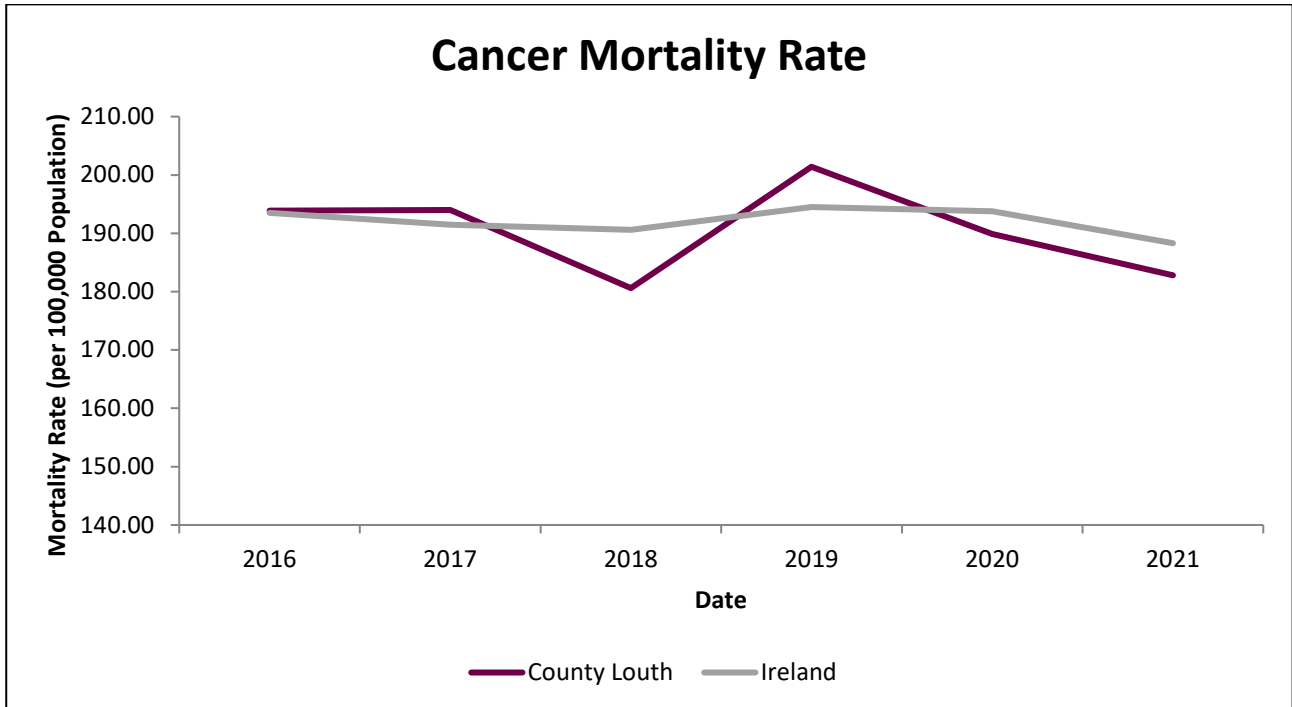


Figure 3-6: Cancer mortality rate.

Source: Statbank (Table DHA12).

ORIEL WIND FARM PROJECT – POPULATION AND HUMAN HEALTH BASELINE INFORMATION

3.1.3 Mental Health

As a mental health indicator, self-reported mental health status is only reported at the regional and national levels. The Eastern and Midland Region to which the population in County Louth belongs, performs similar to the national comparator. In 2019, the percentage of people that reported to have experienced moderately severe to severe depression is 2% in the Eastern and Midlands Region as well as the State of Ireland.

Suicide and intentional self-harm rates and mortality rates attributable to mental health issues suggest high localised sensitivity to mental health pressures in the county area. As shown in Figure 3-7 below, suicide rates in males have been constantly higher than those in females from 2016 to 2021 in County Louth, suggesting high sensitivity in males. In 2021, the standardised suicide rate was 8.6 per 100,000 population for females and 14.7 per 100,000 for males.

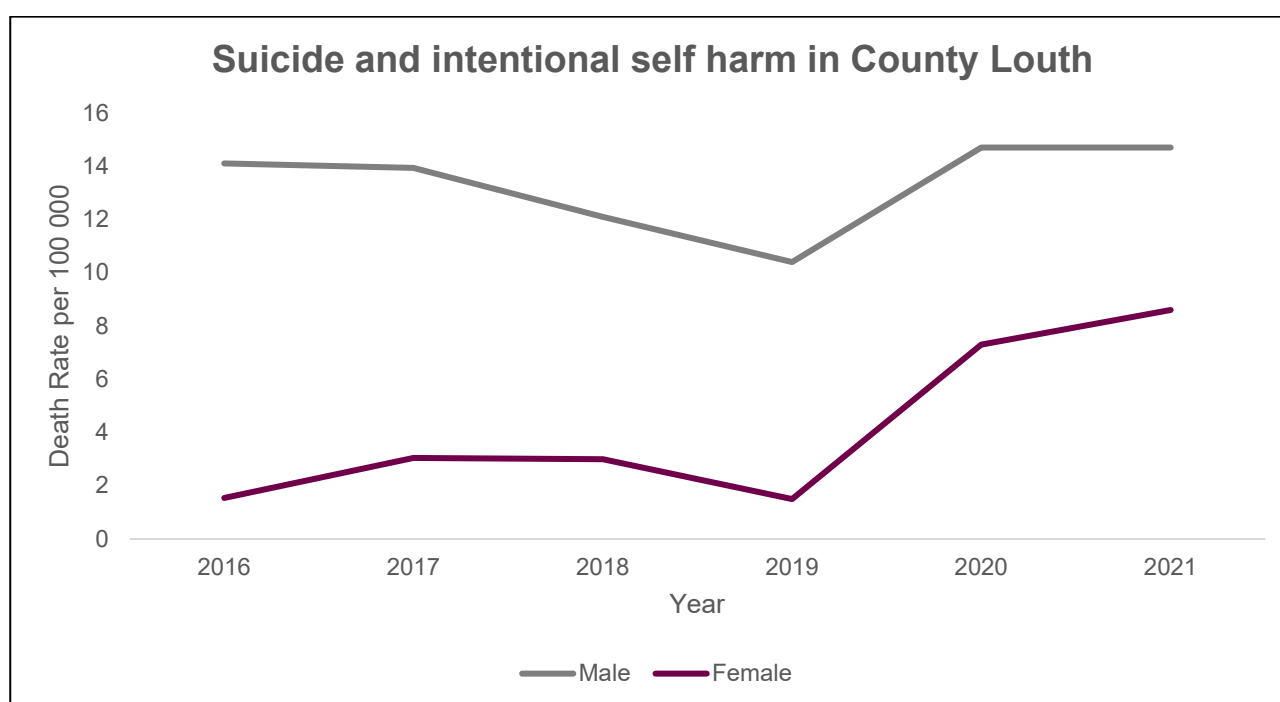


Figure 3-7: Suicide and intentional self-harm death rates in County Louth.

3.1.4 Lifestyle

Lifestyle indicators are only reported at the national level and statistics show a higher percentage of non-smokers than smokers with an opposite trend being observed in those who take alcohol. As shown in Figure 3-8, the percentage of those who take alcohol in Ireland is higher than those who do not. Positively, the proportion of people who consume 5 or more portions of fruit and vegetables per day is higher than those who take less or none per day.

There is no available trend analysis for participation in physical activity; however, a higher proportion of the population in County Louth are physically inactive compared to the Ireland average (see Figure 3-9 below).

ORIEL WIND FARM PROJECT – POPULATION AND HUMAN HEALTH BASELINE INFORMATION

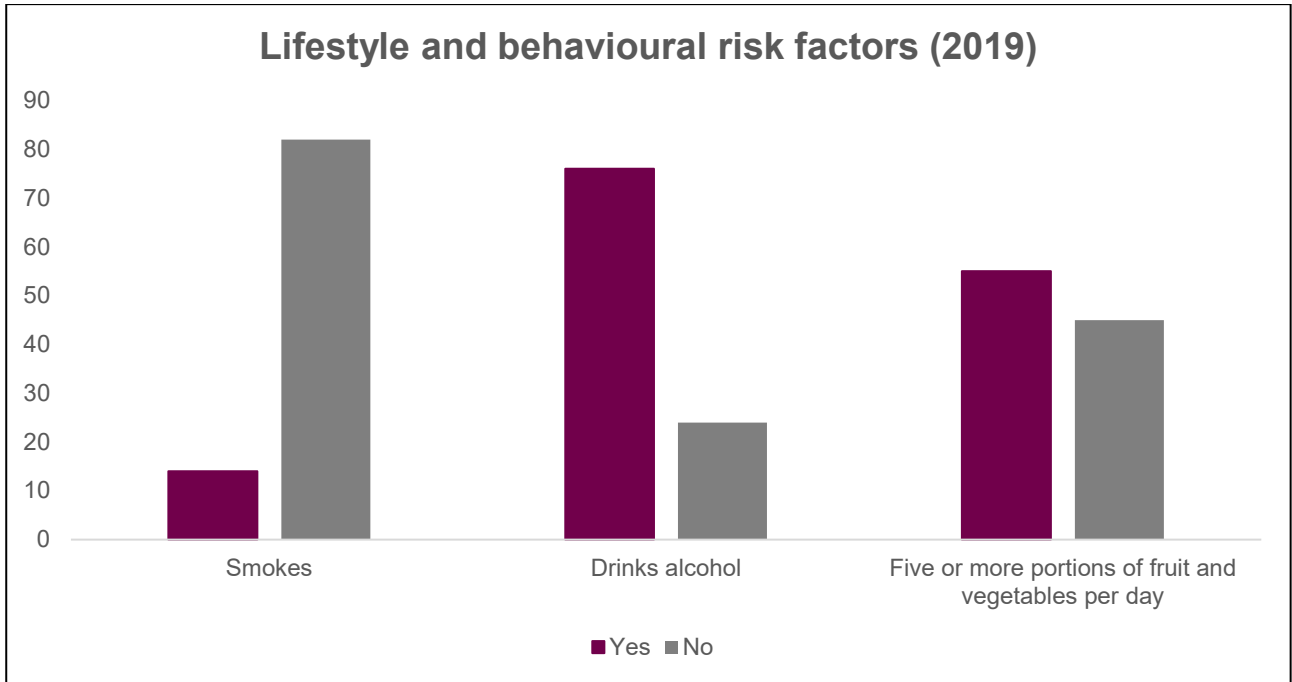


Figure 3-8: Behavioural risk factors in Ireland.

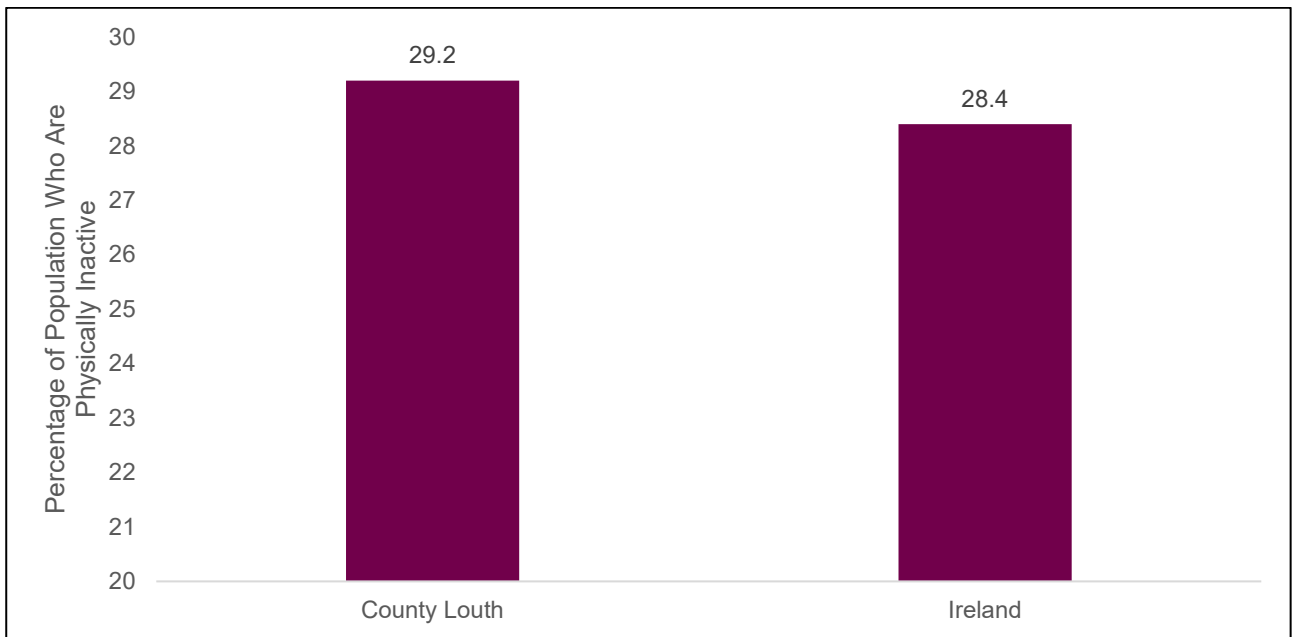


Figure 3-9: Physical inactivity in Ireland.

3.1.5 Deprivation

The Human Health Study Area uses the most deprived small area within close proximity to the Project as representative of sensitive populations. Relevant small areas discussed below are illustrated in Figure 1-2. Near landfall at Dunany and the onshore cable route between Drumcar and Ardee Rural, the most deprived

ORIEL WIND FARM PROJECT – POPULATION AND HUMAN HEALTH BASELINE INFORMATION

small area is within Dunleer (147021006)⁴. This area has an unemployment rate of 32.7% for males and 29.3% females. The lone parent ratio is 41%, 41.8% of the population lives in local authority rented housing, and 34% of the population has only primary education. Near the development area for the onshore cable route and substation site, the most deprived small area is within Ardee Urban (147002005). This area has an unemployment rate of 27.0% for males and 11.5% for females. The lone parent ratio is 22% and 14% of the population has primary education only. For port activities near Greenore, the most deprived small area is within Carlingford (147005008). This area has an unemployment rate of 18.4% for males and 17.9% for females. The lone parent ratio is 40% and 54.9% of the population live in local authority rented housing.

3.2 Northern Ireland Health Data

The Northern Ireland Statistics and Research Agency (2021, 2017) provides health and wellbeing indicators of which the most recent data is available from 2021, and indices of multiple deprivation of which the most recent data is available from 2017. The health baseline indicators are presented in Table 3-1.

Table 3-1: Northern Ireland health baseline indicators.

Indicator	Kilkeel (The Mourne's P Super Data Zone)	Warrenpoint (Crotilieve_K Super Data Zone)	Newry, Mourne and Down	Northern Ireland
General health				
Very good	45%	43%	53%	50%
Good	30%	29%	28%	29%
Fair	16%	17%	13%	14%
Bad	7%	8%	5%	6%
Very bad	2%	3%	2%	2%
Long-term health problem or disability				
Activities not limited	73%	70%	77%	76%
Limited a little	14%	15%	12%	13%
Limited a lot	13%	15%	11%	11%
Long-term health conditions				
No conditions	63%	60%	67%	65%
1 condition	19%	20%	17%	18%
2 conditions	8%	9%	7%	8%
3 or more conditions	10%	11%	8%	9%
Highest level of qualifications				
No qualifications	33%	29%	23%	24%
Level 1	7%	6%	5%	6%
Level 2	13%	12%	13%	14%
Apprenticeship	9%	8%	8%	6%
Level 3	15%	14%	16%	16%
Level 4 and above	21%	29%	32%	32%
Other	3%	2%	2%	2%
Economic activity				
In employment	52%	49%	56%	56%

⁴ Pobal, 2016. *Pobal HP Deprivation Index*. [Online]

Available at: <https://maps.pobal.ie/WebApps/DeprivationIndices/index.html> [Accessed January 2023].

ORIEL WIND FARM PROJECT – POPULATION AND HUMAN HEALTH BASELINE INFORMATION

Indicator	Kilkeel (The Mournes_P Super Data Zone)	Warrenpoint (Crotlieve_K Super Data Zone)	Newry, Mourne and Down	Northern Ireland
Unemployed	3%	4%	3%	3%
Economically inactive	45%	47%	41%	41%

Based on the latest census statistics (2021), the general health of the population in Kilkeel and Warrenpoint is good: 45% reported “very good” health in Kilkeel (The Mournes_P) and 43% reported the same in Warrenpoint (Crotlieve_K). These results are lower than the regional average for Newry, Mourne and Down (53%) and the national average for Northern Ireland (50%), but still favourable. Only 2% in Kilkeel (The Mournes_P) and 3% in Warrenpoint (Crotlieve_K) reported “very bad” health which is similar to the national average. The percentage of people with good health in Kilkeel (The Mournes_P) (30%) is slightly higher (better) than the regional (28%) and national (29%) averages. For Warrenpoint (Crotlieve_K) (29%), the percentage is comparable to the regional and national results.

The percentage of people with a long-term health problem or disability who reported that their activities are not limited is lower (worse) in Kilkeel (The Mournes_P) (73%) and Warrenpoint (Crotlieve_K) (70%) than regional (77%) and national (76%) results. People who reported having 3 or more long-term health conditions in Kilkeel (The Mournes_P) (10%) and Warrenpoint (Crotlieve_K) (15%) is higher (worse) than regional (8%) and national (9%) results.

Education status and qualifications can influence future health. Most recent statistics show that the percentage of people with no qualifications is higher in Kilkeel (The Mournes_P) (33%) and Warrenpoint (Crotlieve_K) (29%) than in Newry, Mourne and Down (23%) and Northern Ireland (24%). The percentage of people 16 and over achieving the highest level qualifications is lower in Kilkeel (The Mournes_P) (21%) and Warrenpoint (Crotlieve_K) (29%) than regionally (32%) and nationally (32%).

Socio-economic status has correlations with health, both for those directly employed and their dependants. Census data shows that the percentage of people in employment is lower in Kilkeel (The Mournes_P) (52%) and Warrenpoint (Crotlieve_K) (49%) than Newry, Mourne and Down (56%) and Northern Ireland (56%). The percentage of people unemployed is the same or comparable across all regions (3-4%). However, the percentage of people economically inactive is higher in Kilkeel (The Mournes_P) (45%) and Warrenpoint (Crotlieve_K) (47%) than the regional and national averages (41%).

Deprivation is a key indicator of overall pressures on the health of a population. The Northern Ireland Multiple Deprivation Measure (2017) (NIMDM), the official measure of spatial deprivation in Northern Ireland, ranks 890 Super Output Areas (SOAs) from 1 (most deprived) to 890 (least deprived). The Measure also provides seven distinct domains of deprivation. According to the NIMDM, Clonallan 1 (N00003716) which is representative of Warrenpoint is ranked highly for overall deprivation: 133 out of 890 SOAs. Most notable, the area is ranked as highly deprived for crime and disorder and income. Kilkeel South 2 (N00003815) is representative of Kilkeel and ranks 113 most deprived out of 890 SOAs. The area is ranked as more deprived for income and employment.

3.3 Employment Trends

Table 3-2 shows the overall unemployment rate in 2011 and 2016 as measured by the responses to the question on principal economic status in the CSO Census. Figure 3-10 presents figures for the economic status of the labour force in the State, County Louth and the Construction Local Population Study Area in 2016. The unemployment rate is calculated by adding the number of persons unemployed to first time job seekers, and then dividing the total by the overall labour force (i.e. total amount of unemployed persons and employed persons).

ORIEL WIND FARM PROJECT – POPULATION AND HUMAN HEALTH BASELINE INFORMATION

Table 3-2: Employment trends and principal economic status.

Study area as per CSO data	At work	Looking for first regular job	Unemployed or given up previous job	Overall unemployed	Labour force	Unemployment rate %
State 2011	1,807,360	34,166	390,677	424,843	2,232,203	19.0%
State 2016	2,006,641	31,434	265,962	297,396	2,304,037	12.9%
Louth 2011	44,232	1,067	12,725	13,792	58,024	23.8%
Louth 2016	50,317	1,145	8,913	10,088	60,405	16.7%
Construction Local Population Study Area 2011	3,907	60	866	926	4,833	19.1%
Construction Local Population Study Area 2016	4,295	50	492	542	4,837	11.2%

Source: CSO 2011, CSO 2016.

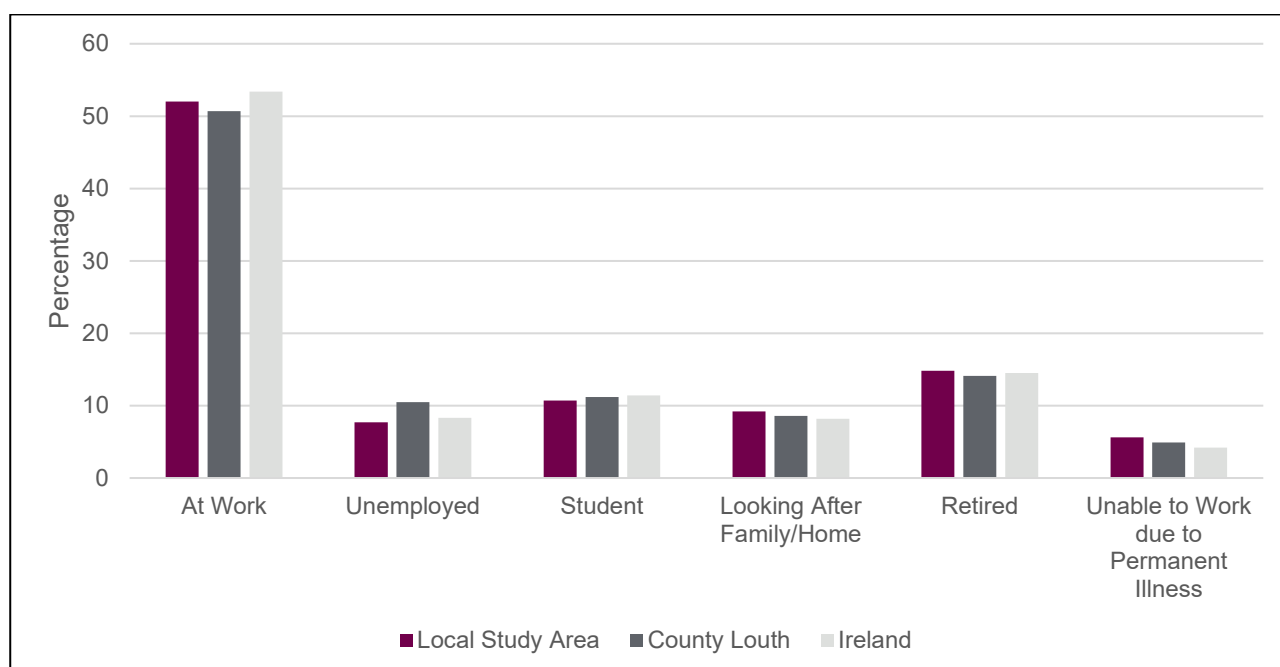


Figure 3-10: Employment trends in 2016.

Source: CSO 2016.

The Quarterly Labour Force Survey (QLFS) are designed to produce quarterly labour force estimates that include the official measure of employment and unemployment in the State (International Labour Organisation (ILO) and provide more up to dated data on employment than that is provided in a census. Table 3-3 shows the national unemployment rate in the years 2016 – 2022, including the unemployment rate from Covid-19.

ORIEL WIND FARM PROJECT – POPULATION AND HUMAN HEALTH BASELINE INFORMATION

Table 3-3: Persons Aged 15 Years and Over Classified by Economic Status

Period	Unemployment rate % (persons aged 15 - 74)	Unemployment rate % (persons aged 15 - 74) COVID-19 adjusted ⁵
2017	6.8%	–
2018	5.8%	–
2019	5.0%	–
2020	5.7%	18.5%
2021	6.2%	16.2%
2022	4.5%	–

Source: CSO.ie.

The unemployment rates were significantly impacted during the Covid-19 pandemic in 2020 – 2021 and additional data showing the Covid-19 adjusted unemployment rate was published as shown in Table 3-3.

Within Northern Ireland the unemployment rate in the period September 2016 to September 2022 is set out in Table 3-4.

Table 3-4: Northern Ireland unemployment rate.

Date	September 2022	September 2021	September 2020	September 2019	September 2018	September 2017	September 2016
Unemployment Rate (%) Northern Ireland	3.8%	5%	6.1%	3.2%	3.1%	3.2%	3.8%

Source: NISRA.

The employment rate in Newry Mourne and Down as per the Labour Force Survey January to December 2020 was 74.8%. The comparable percentage for Northern Ireland is 70.9%.

⁵ The CSO produced a COVID-19 Adjusted Measure of Employment from Quarter 1 (Q1) 2020 until Q4 2021. The estimate for the end of Q1 2021 was calculated by subtracting those who were in receipt of the Pandemic Unemployment Payment (PUP) at the end of March 2021 (end of Q1 2021) from the numbers in employment during Q1 2021. The COVID-19 Adjusted Measure of Employment is a crude measure which should be considered as the lower bound for employment.

ORIEL WIND FARM PROJECT – POPULATION AND HUMAN HEALTH BASELINE INFORMATION

4. SOCIO-ECONOMIC TRENDS

Figure 4-1 illustrates socio-economic groupings in terms of employment, which is a useful statistic considering the diverse range of employment within the Construction Local Population Study Area and how that compares with County Louth and the State.

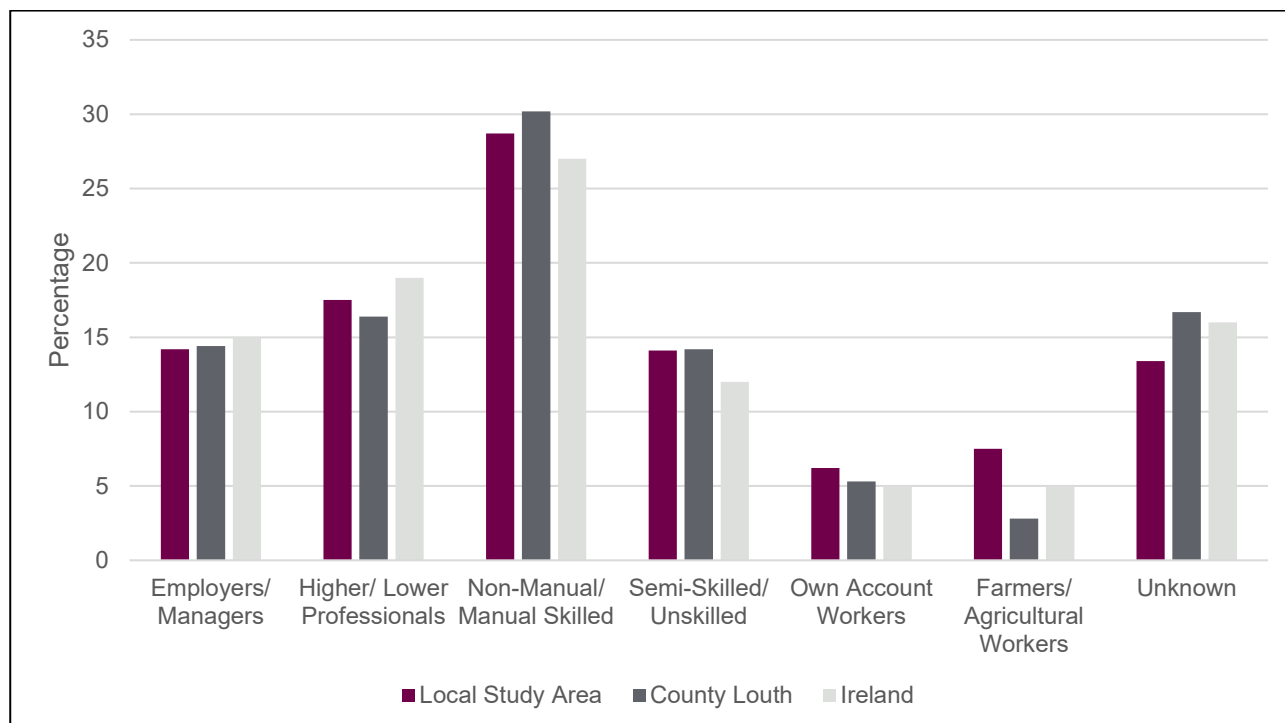


Figure 4-1: Employment in 2016 based on socio-economic grouping.

Source: CSO 2016.

The socio-economic employment for Northern Ireland can be seen below in Table 18-11.

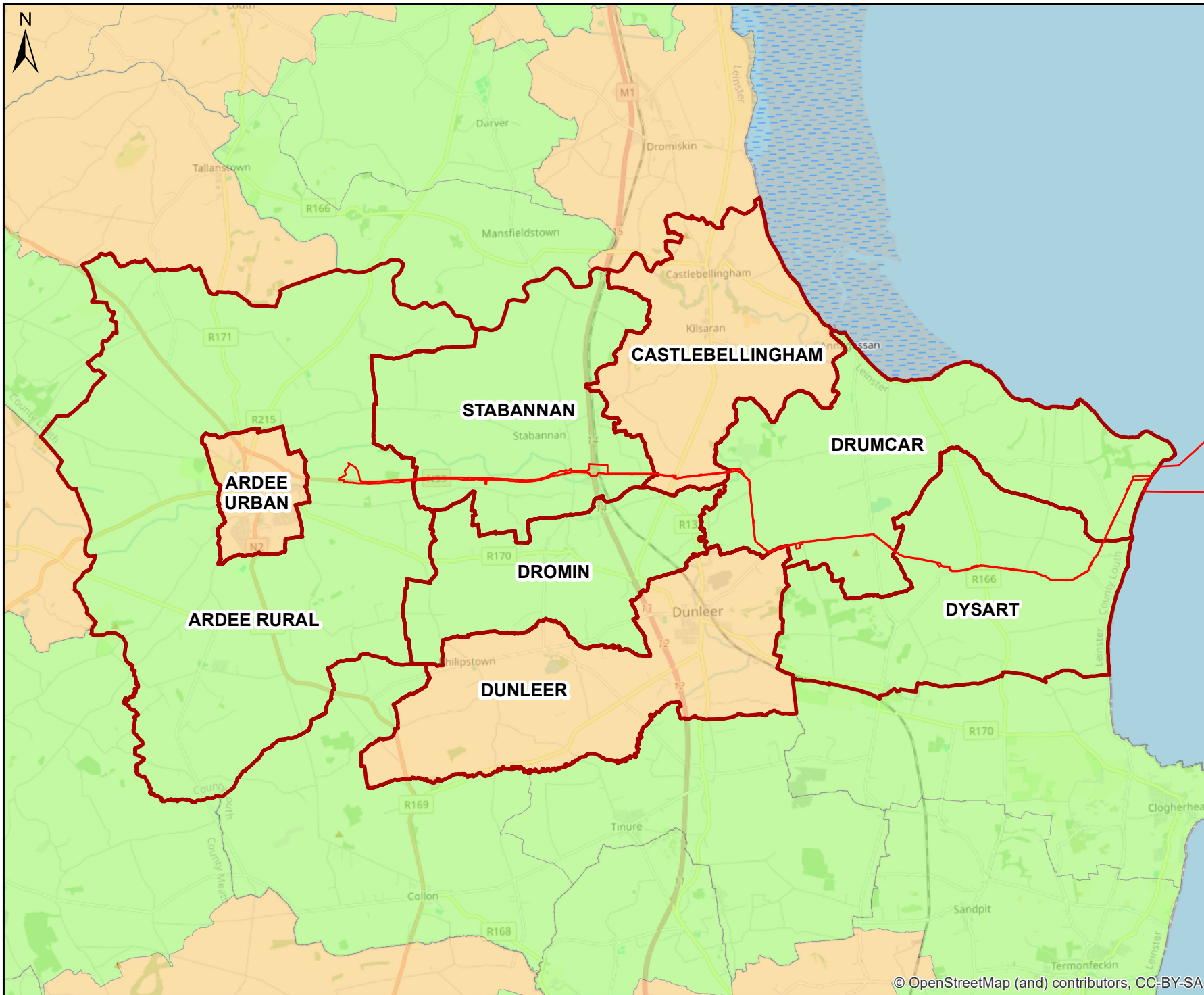
Table 4-1: Percentage in employment by industry sector, age 16 and over (Northern Ireland).

Industry Sector	Male (percentage)	Female (percentage)	All Persons (Percentage)
Agriculture, forestry and fishing	3.3%	0.8%	2.1%
Energy and water	2.9%	0.7%	1.9%
Manufacturing	11.7%	5.7%	17.9%
Construction	13.3%	1.6%	7.6%
Distribution, hotels and restaurants	17.5%	18.3%	17.9%
Transport and communication	11.0%	3.2%	7.2%
Banking and finance	16.1%	12.2%	14.2%
Public administration, education and health	17.9%	52%	34.4%
Other services	6.2%	5.5%	5.9%

Source: NISRA, Labour Force Survey 2022.

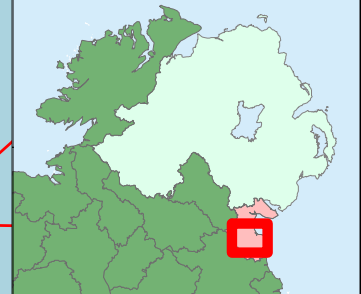
4.1 Affluence and Deprivation Trends

Figure 3-10 is sourced from the Pobal Deprivation Index which uses information from the CSO's Census, such as employment, age profile and educational attainment, to calculate the score for the Construction Local Population Study Area.



- Legend**
- Planning Application Boundary
- Deprivation Index 2022**
- Marginally Above Average
 - Marginally Below Average

Data Sources: OWL, Tailte Éireann, CSO, Pobal.



Client



Project

Oriel Wind Farm Project

Title

**Figure 4-2
Deprivation Index in the
Construction Local Population
Study Area**



A TETRA TECH COMPANY

West Pier Business Campus,
Dun Laoghaire,
Co Dublin,
Ireland.

Tel: +353 (0) 1 4882900
Email: ireland@rpsgroup.com
Web Page: rpsgroup.com/ireland

Issue Details	
Drawn By: NR	Project No. MDR1520b
Checked By: MH	File Ref:
Approved By: CC	MDR1520bArc3104F02
Scale: 1:110,000 @ A4	Projection:
Date: 19/12/2023	ITM (IRENET95) Geographic Co-ordinates: ETRS89

NOTE:

1. This drawing is the property of RPS Group Ltd. It is a confidential document and must not be copied, used, or its contents divulged without prior written consent.
2. All levels are referred to Ordnance Datum, Malin Head.
3. ©Tailte Éireann. All rights reserved. Licence number CYAL3030216.

ORIEL WIND FARM PROJECT – POPULATION AND HUMAN HEALTH BASELINE INFORMATION

The same Pobal Deprivation Index shows that within the Wider Population Study Area almost all areas fall marginally above or below the average. There are however areas within larger urban centres including Dundalk and Kells which are classified as disadvantaged.

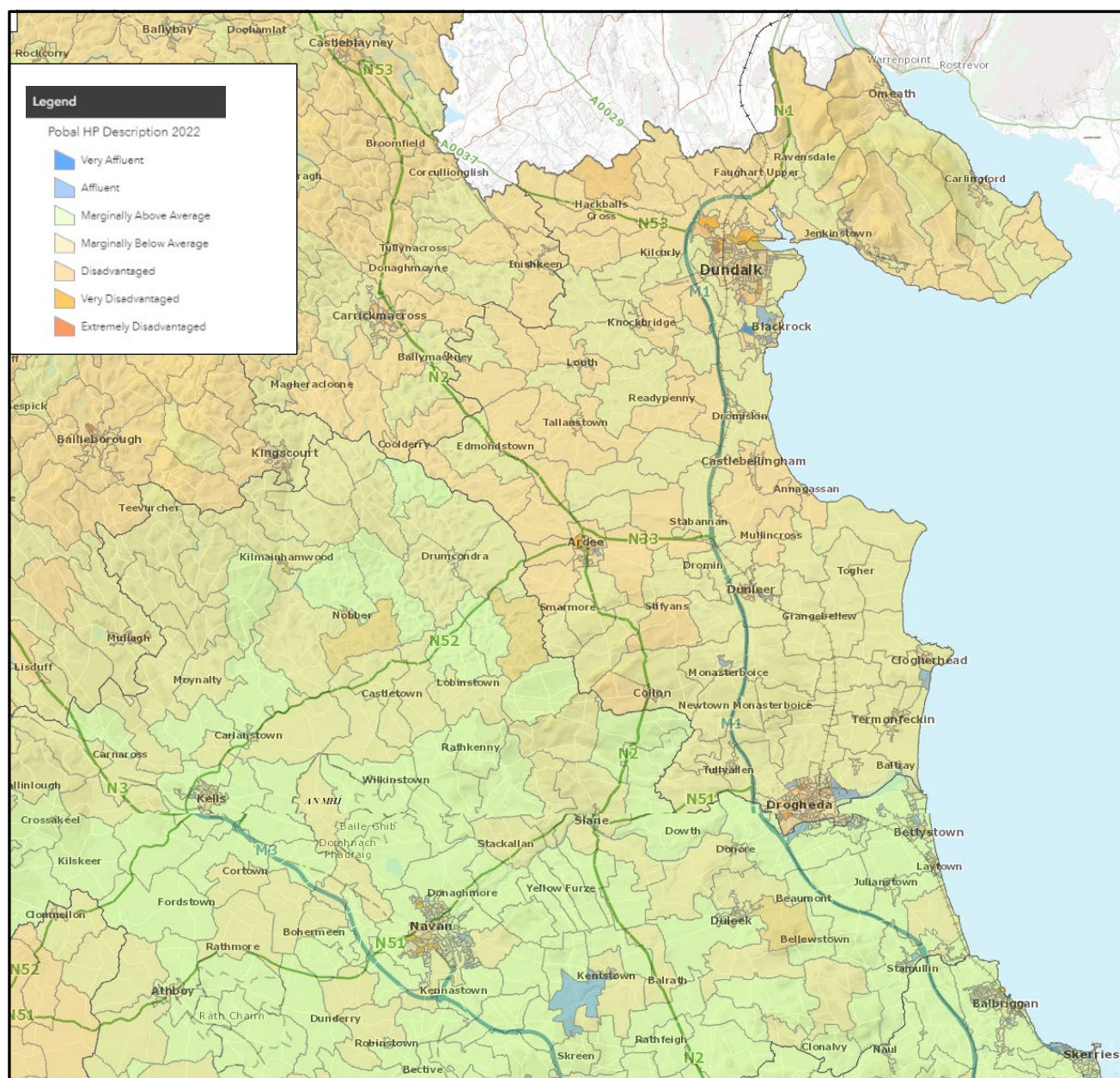


Figure 4-3: Deprivation Trends in the Wider Population Study Area (within Republic of Ireland).

Source: Pobal Deprivation Index.

The Northern Ireland Multiple Deprivation Measure 2017 is used to measure deprivation and includes income and employment, health and disability, education, skills and training, access to services, living environment and crime and disorder.

Table 4-2 provides a summary of key data for Northern Ireland and for Newry, Mourne and Down.

ORIEL WIND FARM PROJECT – POPULATION AND HUMAN HEALTH BASELINE INFORMATION

Table 4-2: Northern Ireland and Newry Mourne and Down Multiple Deprivation Measure 2017.

	Proportion of the population living in households whose equivalised income is below 60 per cent of the NI median (%)	Proportion of the working age population who are employment deprived (%)	Standardised ratio of people with a long-term health problem or disability (Excluding Mental Health problems) (NI = 100)	Proportion of those leaving school aged 16, 17 and 18 not entering Education, Employment or Training (%)	Proportion of domestic dwellings that are unfit (%)	Proportion of domestic dwellings without (1) modern boiler, or (2) loft insulation and double glazing (%)	Rate of Violence (including sexual offences), robbery and public order (per 1,000 population)
Newry, Mourne and Down	15.3%	21.5%	98.0	1.8%	3.10%	29.1%	14.9%
Northern Ireland	13.1%	20.6%	100.0	2.8%	2.4%	26.9%	15.6%

Source: NISRA.

ORIEL WIND FARM PROJECT – POPULATION AND HUMAN HEALTH BASELINE INFORMATION

5. AMENITIES, RECREATION AND COMMUNITY FACILITIES

Table 5-1 to Table 5-4 detail the names and addresses of sports facilities, schools and childcare facilities that are located within the Operational Local Population Study Area. Table 5-5 to Table 5-8 detail the name and address of sports facilities, childcare facilities and primary and secondary schools located within the Construction Local Population Study Area. Hospitals within the Wider Population Study Area are detailed in Table 5-9.

Table 5-1: Sports facilities within the Operational Local Population Study Area.

No.	Name	Address
1	Geraldines GFC	Marlbog Rd, Haynestown, Haggardstown, Co. Louth
2	Dundalk Sports Centre	Tom Bellew Ave, Muirhevnamore, Dundalk, Co. Louth
3	Dundalk Young Irelands GAA Pitch	Upper Marshes, Marshes Upper, Dundalk, Co. Louth
4	Dundalk IT Sports Grounds	Marshes Upper, Dundalk, Co. Louth
5	Dundalk Cricket Club	Green Rd, Cambrickville, Co. Louth
6	St. Dominics F.C	Demesne, Dundalk, Co. Louth
7	Dundalk Gaels GFC	The Ramparts, Marshes Lower, Dundalk, Co. Louth
8	Glenmuir United Football Club	Dublin Rd, Hoey's Ln, Marshes Upper, Louth
9	Muirhevna Mor Football Club	Tom Bellew Ave., Marshes Upper, Dundalk, Co. Louth
10	Na Piarasigh/Blackrock CLG	Blackrock Rd, Marsh South, Dundalk, Co. Louth
11	Friary Field	The Demesne, Demesne, Dundalk, Co. Louth
12	Bay Football Club	Blackrock Rd, Marsh South, Dundalk, Co. Louth
13	Orial Park	Cambrickville, Dundalk, Co. Louth
14	Noel Gorman Park	544 Aisling Park, Moorland, Dundalk, Co. Louth
15	Oriel Park	Carrickmacross Rd, Cambrickville, Dundalk, Co. Louth
16	Woodview Celtic Football	3 Medebawn, Avenue Rd, Marshes Lower, Dundalk, Co. Louth
17	Sean O'Mahonys Gaa Club	Point Rd, Mountain View, Marsh North, Dundalk, Co. Louth
18	Clan na Gael	Ecco Road, Demesne, Dundalk, Co. Louth
19	Louth Gaa	13 Finnabair Cres, Muirhevnamore, Dundalk, Co. Louth
20	Dowdallshill Gaa Club	St Brigids Park, Newry Rd, Dowdallshill, Dundalk, Co. Louth
21	St Josephs Gaa Club	Commons Rd, Commons, Dundalk, Co. Louth
22	St Patricks Gaa Club	Commons Rd, Commons, Dundalk, Co. Louth
23	Naomh Malachl Gaa Club	Commons Rd, Commons, Dundalk, Co. Louth
24	The Bainseach	Fatima Dr, Moorland, Dundalk, Co. Louth
25	Kilkerley Emmets Gaa Club	Tankardsrock, Kilkerley, Co. Louth, A91 XR68
26	Glyde Rangers Gaa Club	Dundalk Rd, Rathbrist, Dundalk, Co. Louth
27	Dundalk Rugby Club	Mill Rd, Dundalk, Co. Louth
28	Rugby Club Grounds	Castletown, Co. Louth
29	Dundalk Golf Club	New Golf Links Rd, Haggardstown, Dundalk, Co. Louth
30	Rock Celtic FC	Sandy Ln, Haggardstown, Co. Louth
31	Inniskeen Grattans Gaa Club	Kednamisha, Co. Monaghan
32	St Brides Gaa Club	Páirc an Chuinnigh, Millpark, Knockbridge, Co. Louth
33	Faughart Rovers	28 Hamilton Avenue. Mounthamilton. Dundalk. Co. Louth
34	Clovehill Golf Club	Lough Rd, Newry BT35 9XP, United Kingdom
35	Silverbridge Football Club	Fords Cross, New Rd, Silverbridge, Newry BT35 9NB, United Kingdom
36	Bellurgan United Football Club	Bellurgan, Dundalk, Co. Louth

ORIEL WIND FARM PROJECT – POPULATION AND HUMAN HEALTH BASELINE INFORMATION

No.	Name	Address
37	Carlingford Knights RFC	The Foy Centre, Dundalk St, Liberties of Carlingford, Carlingford, Co. Louth.
38	Carlingford Sailing Club	Ghan Rd, Liberties of Carlingford, Carlingford, Co. Louth
39	Cooley Kickhams GFC	Monksland, Carlingford, Co. Louth
40	Greenore Golf Club	Greenore, Co. Louth
41	Kilkeel Leisure Centre	Mourne Esplanade, Kilkeel, Newry
42	Kittys Road Pitch	18 Kittys Rd, Kilkeel, Newry
43	Newry Basketball Club	10 Dunnaval Rd, Kilkeel, Newry
44	Ballymartin GAC	5-7 Pats Rd, Ballymartin, Newry
45	Peter Mcpartlan Park	Newry, UK
46	Warrenpoint Town FC	88 Upper Dromore Rd, Warrenpoint, Newry
47	Warrenpoint Golf Club	Lower Dromore Road, Newry
48	Kellys Golf Centre	45 Milltown St, Warrenpoint, Newry
49	Flagstaff Lodge Footgolf	17 Forkhill Road, Cloughoge, Newry
50	Killeavy GAC	Carn View, Cloughoge, Newry
51	Carrickcruppen GAC	Lowes Ln, Camlough, Bessbrook, Newry
52	Camlough Rovers FC	15 Newry Rd, Camlough, Newry
53	Shane O Neil's GFC	6, 8 Newry Rd, Camlough, Newry
54	Down GAA	46-48 Main St, Castlewellan
55	St Malachy's Castlewellan GAC	30 Circular Rd, Castlewellan
56	Glasdrumman GAA	Newry BT34 4RA, United Kingdom
57	Cloverhill Golf Club	Lough Rd, Newry
58	Tullyvallen FC	45 Blaney Rd, Newry
59	Tandragee Golf Club	8HXJ+QQ Craigavon, United Kingdom
60	Bandridge Golf Club	9P69+46 Banbridge, United Kingdom
61	Laurelvale Cricket Club	25 Mullavilly Rd, Tandragee, Craigavon BT62 2LX, United Kingdom
62	Banbridge Town Football Club	8PXP+W3 Banbridge, United Kingdom
63	Banbridge Gaelic Football Club	4 Ashgrove Ave, Banbridge BT32 3RG, United Kingdom
64	Seapatrik F.C.	Banbridge BT32 4NB, United Kingdom
65	Banbridge Rugby Football Club	8PRJ+C6 Banbridge, United Kingdom
66	Tandragee Rovers fc	9H3R+WG Craigavon, United Kingdom
67	Gilford Crusaders FC	34 Woodlands, Gilford, Craigavon BT63 6JW, United Kingdom
68	Scarva Rangers Football Club	Scarva Park, Main Street, Scarva BT63 6LS, United Kingdom
69	Laurelvale FC	Laurel Ln, Tandragee Rd, Laurelvale, Craigavon BT62 2LP, United Kingdom
70	Richhill A.F.C	11 Hazelwood Grove, Richhill, Armagh BT61 9JJ, United Kingdom
71	Annaclone GAA Club	7RW9+3C Banbridge, United Kingdom
72	Moneyslane Football Club - Jubilee Park	6 Moneyslane Rd, Ballyward Rd, Moneyslane, Castlewellan BT31 9PT, United Kingdom
73	Kilcluney 3G Football Pitch	128 Mowhan Rd, Markethill, Armagh BT60 1RR, United Kingdom
74	Ballymacnab Round Towers GFC	79R8+4M Armagh, United Kingdom
75	Granemore GFC	126 Granemore Rd, Tassagh, Armagh BT60 2NJ, United Kingdom
76	Clann Na Banna GAA	Co Down, Cottage Park, 32 Scarva Rd, Banbridge BT32 3AS, United Kingdom
77	Aghaderg GAC	163 Scarva Rd, Banbridge BT32 3QL, United Kingdom

ORIEL WIND FARM PROJECT – POPULATION AND HUMAN HEALTH BASELINE INFORMATION

No.	Name	Address
78	Ballymacnab Round Towers GFC	79R8+4M Armagh, United Kingdom
79	King George V Playing Fields	12 Linenhall St, Banbridge BT32 3ES, United Kingdom
80	Banbridge Hockey Club	9P5C+XV Banbridge, United Kingdom
81	Banbridge Boxing Club	Havelock Park BT32 4LU, United Kingdom
82	Banbridge Leisure Centre	15 Downshire Pl, Banbridge BT32 3JY, United Kingdom
83	Tandragee Recreation Centre	Co. Armagh, 24 Madden Rd, Tandragee, Craigavon BT62 2DG, United Kingdom
84	Richhill Recreation Centre	The New Line, New Line, Richhill, Armagh BT61 9QR, United Kingdom
85	Ballela GAC	Banbridge BT32 3TF, United Kingdom
86	Dromara Village Football Club	Rathfriland Road, Dromore BT25 2EB, United Kingdom
87	Mossvale Equestrian Centre	18 Church Rd, Dromara, Dromore BT25 2NS, United Kingdom

Source: Google maps.

Table 5-2: Childcare facilities within the Operational Local Population Study Area.

No.	Name	Address
1	Little Oaks Early Years Limited	Haggardstown, Co. Louth
2	ABC Childplay Creche	Townspark, Castletown Road, Dundalk, Co. Louth
3	Blackrock Montessori School	Old Golf Links Rd, Blackrock, Co. Louth
4	Bright Beginnings	257 Lower Point Rd, Dundalk, Co. Louth
5	Bright Stars Playschool	40 Rathmount, Seafield Road, Blackrock, Dundalk, Co. Louth
6	Castletown Girls Preschool	Castletown Girls National School, Castletown Road, Dundalk, Co. Louth
7	Children's World	Dulargy, Ravensdale, Dundalk, Co. Louth
8	Children's World	Faughart N.S., Faughart, Dundalk, Co. Louth
9	Claddagh's Treasures Preschool	69 Claddagh Park, Tom Bellew Ave, Dundalk, Co. Louth
10	Cul an Ti Playschool	Dunbin, Knockbridge, Dundalk, Co. Louth
11	De La Salle PreSchool	St. Nicholas Montessori Boys National School, Philip St, Dundalk, Co. Louth
12	Field of Dreams	68 Cypress Garden, Bay Estate, Dundalk, Co. Louth
13	Footprints PreSchool	Blackrock Community Centre, Sandylane, Dundalk, Co. Louth
14	Happy Days Playschool	Commons Road, Dromiskin, Dundalk, Co. Louth
15	Happy Days PreSchool	CBS Primary School, Chapel Street, Dundalk, Co. Louth
16	Kidz Akademy Ltd	20 Greenacres, Avenue Road, Dundalk, Co. Louth
17	Knockbridge Childcare	Newtown, Knockbridge, Dundalk, Co. Louth
18	Knockbridge Childcare	St. Marys Hall Community Centre, Knockbridge, Dundalk, Co. Louth
19	Kool Kidz Creche	Darver, Readypenny, Dundalk, Co. Louth
20	Liana Lally Preschool	Tuites Lane, Old Golf Links Road, Blackrock, Dundalk, Co. Louth
21	Lios na nOg Playgroup CLG	St. Joseph School Campus, Tom Bellew Avenue, Dundalk, Co. Louth
22	Little Buds Playschool	54 Avondale Pk, Dundalk, Co. Louth
23	Little Nippers Playschool	New Road, Bellurgan, Co. Louth
24	Little Partners Creche Ltd	Unit 3, Partnership Court, Park Street, Dundalk, Co. Louth
25	Miniminds Preschool	Park Hall, Coulter Place, Dundalk, Co. Louth
26	Mol an Óige Community Childcare	Inniskeen, Dundalk, Co Louth

ORIEL WIND FARM PROJECT – POPULATION AND HUMAN HEALTH BASELINE INFORMATION

No.	Name	Address
27	Naiscoil Lorcan	Omeath, Dundalk, Co. Louth
28	Pugwash Bay LTD	97 Loughantarve, Knockbridge Dundalk, Co. Louth
29	Pugwash Bay Ltd	Lis na Dara, Carrick Road Dundalk, Co. Louth
30	Pugwash Bay LTD	12 Oakvale Park, Bay Estate Dundalk, Co. Louth
31	Rachael's Room	Shelagh, Hackballscross Dundalk, Co. Louth
32	Ready Steady Grow	Killanny Community Centre, Lannatt, Corcreaghy Carrickmacross P.O. Dundalk, Co. Louth
33	Ready, Steady, Grow: Stonetown	Stonetown National School, Luabhdh Dundalk, Co. Louth
34	Realt na Mara Preschool and Afterschool Club	The Cabin, Grounds of Realt na Mara NS, Mill Street, Co. Louth
35	Redeemer Creche & Playgroup	Redeemer Creche & Playgroup Ashling Park, Dundalk, Co. Louth
36	Scoil Beag	Balriggeran, Kilcurry Dundalk, Co. Louth
37	Shapes and Sizes	57 Mill St., Dundalk, Co. Louth
38	St. Malachy's PreSchool	Anne Street, Dundalk, Co. Louth
39	St. Nicholas N.S. Pre-School	Nicholas Street, Dundalk, Co. Louth
40	Stepping Stones	45 Anne Street, Dundalk, Co. Louth
41	Tallanstown Montessori Pre-School	Tallanstown, Dundalk, Co. Louth
42	The Holy Family Parish Community Creche	2 Grange Close, Muirhevnamore, Dundalk, Co. Louth
43	The Playroom Project	Mullaharlin Park, Dublin Road, Dundalk, Co. Louth
44	The Wendy House	Mountbagnal, Riverstown, Dundalk, Co. Louth
45	Tiny Tots Creche	Old School, Kilkerry, Dundalk, Co. Louth
46	Tiny Tots Nursery	Burex Business Park, Old Coes Road, Dundalk, Co. Louth
47	Tír na nÓg Naíonra Childcare Service	St. Mochta's National School, Louth Village, Dundalk, Co. Louth
48	Woddlers & Toddlers	St Patrick's GAA, Lordship, Riverstown, Dundalk, Co. Louth
49	Cooley Community Playgroup Ltd	Monksland, Carlingford, Co. Louth
50	Little People Pre-- School	The Foy Centre, Dundalk Road, Carlingford, Co. Louth
51	Children's World	Dulargy, Ravensdale, Dundalk, Co. Louth
52	Children's World	Faughart NS, Faughart, Dundalk, Co. Louth
53	Kilkeel PG	Kilkeel Leisure Centre, Mourne Esplanade, Kilkeel, Newry, Co Down
54	Kingdom PG	Dunnavil Road, Kilkeel, Newry, Co Down
55	Kilkeel Nursery School	124 Harbour Road, Kilkeel, Newry, Co Down
56	Atticall PG	Atticall Community Centre, 140 Tullyframe Road, Kilkeel, Co Down
57	Naiscoil na mBeann PG	127a Newcastle Road, Kilkeel, Co Down
58	Annalong PS NU	31 Kilkeel Road, Annalong, Newry, Co Down
59	Dunnaman Children's Centre PG	St Colmans Primary School, 5 Greencastle Road, Kilkeel, Co Down
60	Windmill PG	High Street Community Centre, Well Lane, High Street, Newry, Co. Down
61	Kidzone PG	Cloughreagh, 20b Millvale Road, Bessbrook, Newry, Co Down
62	Clonduff PG	Carcullion House, 25 Rostrevor Road, Hilltown, Newry, Co Down
63	Ashgrove Nursery School	23 Chestnut Grove, Newry, Co Down
64	Bessbrook PS NU	14 Church Road, Bessbrook, Newry, Co Armagh
65	Little Folk PG	1 Cloughmore Road, Rostrevor, Newry, Co Down
66	Strawberry Tree PG	41a Sheeptown Road, Saval, Newry, Co. Down
67	Giggles Day Care PG	103 Camlough Road, Newry, Co Armagh

ORIEL WIND FARM PROJECT – POPULATION AND HUMAN HEALTH BASELINE INFORMATION

No.	Name	Address
68	Naiscoil an Iuir PG	74 Kilmorey Street, Newry, Co Down
69	Naiscoil Shliabh gCuilinn PG	The Pastoral Centre, The Village, Jonesboro, Newry, Co Down
70	St Patrick's PS NU	Ballinlare Gardens, Newry, Co. Down
71	Glenn and Barr PG	School Road, Jerrettspass, Newry, Co Armagh
72	St Joseph's Convent PS NU	Edward Street, Newry, Co Down
73	St Clare's Abbey PS NU	12 Courtenay Hill, Newry, Co Down
74	Happy Faces Day Care Nursery PG	3 Silverbridge Road, Crossmaglen, Newry, Co Armagh
75	St Moninna's PS NU	81 Chancellors Road, Newry, Co Down
76	Iveagh PS NU	17 Castle Hill, Rathfriland, Co Down
77	Killeen Playschool PG	2 Kelly's Road, Killeen, Newry, Co Armagh
78	Little People Pre School-Centre PG	Ninemile Road, Newtownhamilton, Newry, Co Down
79	Little Explores Nursery PG	61 Concession Road, Culloville, Crossmaglen, Newry, Co Armagh
80	Forkhill Pre School PG	93 Main Street, Shean, Forkhill, Newry, Co Armagh
81	Meigh Community Pre School PG	5a Dromintee Road, Meigh, Newry, Co Down
82	Rascal's 'n' Ruffians PG	10 Betty's Hill Road, Newry, Co Down
83	Naiscoil an Chreagain PG	Silverbridge Resource Centre, New Road, Silverbridge, Newry, Co Down
84	St Joseph's PS NU	28 Convent Hill, Bessbrook, Newry, Co Armagh
85	St Patrick's PS NU	54 Carron Road, Crossmaglen, Newry, Co. Down
86	St Mary's PS NU	17 Maphoner Road, Mullaghbawn, Newry, Co Down
87	St Patrick's PS NU	11 Tullynavall Road, Cullyhanna, Newry, Co. Down
88	St Peter's PS NU	66 Derrymore Road, Bessbrook, Newry, Co Down
89	St Malachy's PS NU	3 Chapel Road, Camlough, Newry, Co Down
90	Kingdom PG	Dunnavil Road, Kilkeel, Newry, Co Down
91	Jolly Tots PG	4 Old Road, Mayobridge, Newry, Co Down
92	Seaview Nursery School	61 Great George's Street, Warrenpoint, Newry, Co Down
93	Lower Mourne Pre School PG	Longstone Community Hall, 65-67 Longstone Road, Annalong, Newry, Co Down
94	Pyntzpass PG	The Meeting Place, 16-18 Church Street, Poyntzpass, Newry, Co Down
95	Carrick Pre School PG	63 Ballydesland Road, Burren, Warrenpoint, Newry, Co Down
96	St Patrick's PS NU	9 Chapel Hill, Mayobridge, Newry, Co. Down
97	Busy Bees Pre School PG	St Mary's Community Hall, 14 Bridge Road, Burren, Warrenpoint, Newry, Co Down
98	St. Malachy's PS NU	4 Ballymoney Road Kilcoo, Newry, Co Down
99	Newcastle Pre School PG	10-14 Central Promenade, Newcastle, Co Down
100	Little Sunbeams Pre School & PG	27 Old Grand Jury Road, Saintfield, Co Down
101	Ballynahinch PS NU	Croob Park, Ballynahinch, Co Down
102	Downpatrick Nursey School	5-7 Mount Crescent, Downpatrick, Co Down
103	Kids Kabin Cross Community PG	21 Chapel Lane, Drumaroad, Castlewellan, Co Down
104	Leitrim Community PG	9 Backaderry Road, Leitrim, Castlewellan, Co Down
105	Magheradroll PS NU	38a Main Street, Ballynahinch, Co Down
106	Play Links PG	40A The Links, The Playing Fields, Strangford, Co Down
107	Rockmount Day Nursery PG	67 Dromore Road, Ballynahinch, Co Down
108	Safe and Sound Day Nursery PG	43 Crabtree Road, Ballynahinch, Co Down
109	Ardglass Pre School PG	21 Downpatrick Road, Ardglass, Co Down

ORIEL WIND FARM PROJECT – POPULATION AND HUMAN HEALTH BASELINE INFORMATION

No.	Name	Address
110	Drumaness Cross Community PG	9a Drumsnade Road, Drumaness, Ballynahinch, Co Down
111	Newcastle PS NU	17a Shimna Road, Newcastle, Co Down
112	Rathfriland Pre School PG	21 John Street, Rathfriland, Newry, Co Down
113	St Colmcille's Nursery School	31 Killough Road, Downpatrick, Co Down
114	Convent of Mercy Nursery School	Folly Lane, Downpatrick, Co Down
115	Littleones Day Nursery PG	35 Racecourse Hill, Downpatrick, Co Down
116	Loughinisland Cross Com PG	35 Loughinisland Road, Loughinisland, Downpatrick, Co Down
117	Rathkeltair Cross Com Pre School PG	Rathkeltair Road, Downpatrick, Co Down
118	Ballykinlar Cross Community Pre School Ltd PG	The Playing Fields, Marian Park, Ballykinlar, Co Down
119	Killough PG	St Joseph's Primary School, 58 Main Street, Killough, Co Down
120	Killyleagh Integrated PS NU	12 Shrigley Road, Killyleagh, Downpatrick, Co Down
121	Saul Community Pre School PG	38 St Patrick's Road, Saul, Downpatrick, Co Down
122	Teconnaught Cross Community Pre School PG	Teconnaught Community Centre, 1a Drumnaconagher Road, Teconnaught, Co. Down
123	Academy Nursery School PS NU	194 Listooder Road, Saintfield, Ballynahinch, Co. Down
124	Castlewellan Community PG	Castlewellan Community Centre, 32 Circular Road, Castlewellan, Co Down
125	Naiscoil Bheanna Boirche PS NU	43 Bunker's Hill, Castlewellan, Co Down
126	St Mary's PS NU	31a Elmgrove Park, Newcastle, Co Down
127	Apple Blossom Pre School PG	St Joseph's Primary School, 4 Ballynahinch Road, Crossgar, Co Down
128	Cedar Integrated PS NU	29 Kilmore Road, Crossgar, Co Down
129	Naiscoil Dhun Padraig PG	The Scout Hall, 48 Thomas Russell Park Irish Street, Downpatrick, Co Down
130	St Malachy's PS NU	33 Lower Square, Castlewellan, Co Down
131	Banbridge Nursey School	3A Lurgan Road, Banbridge, Co Down, BT32 4AF
132	Downshire Nursery School	Primrose Gardens, Banbridge, Co Down, BT32 3EN
133	Rathfriland Pre School PG	21 John Street, Rathfriland, Newry, Co Down, BT34 5QH
134	Little Friends Pre School PG [Banbridge]	67 Huntley Road, Banbridge, Co Down, BT32 3UA
135	Ladybird Lane Pre School PG [Banbridge]	55 Castlewellan Road, Banbridge, Co Down, BT32 4JF
136	Rathfriland Pre School PG	21 John Street, Rathfriland, Newry, Co Down, BT34 5QH
137	Naiscoil Bheanna Boirche PS NU [Castlewellan]	43 Bunker's Hill, Castlewellan, Co Down, BT31 9EB
138	Mother Hubbard's Day Nursery	170 Banbridge Rd, Dromara, Kinallen, Dromore BT25 2NR, United Kingdom

Source: Tusla and EANI.

Table 5-3: Primary schools within the Operational Local Population Study Area.

No.	Name	Address
1	Tallanstown NS	Tallanstown, Dundalk, Co. Louth
2	Dun Dealgan NS	Jocelyn Street, Dundalk, Co. Louth
3	Castletown RD Convent	Castletown Road, Dundalk, Co. Louth
4	Knockbridge Mixed NS	Knockbridge, Dundalk, Co. Louth
5	SNN Maolmhaodhagh C	Anne Street, Dundalk, Co. Louth

ORIEL WIND FARM PROJECT – POPULATION AND HUMAN HEALTH BASELINE INFORMATION

No.	Name	Address
6	SNN Maolmhaodhagh N	Anne Street, Dundalk, Co. Louth
7	SN Oilibear Beannaithe	Stonetown, Dundalk, Co. Louth
8	St Nicholas Monastery NS	Philip Street, Dundalk, Co. Louth
9	Scoil Mhuire Gan Smal	Kilkerley, Dundalk, Co. Louth
10	Dromiskin Mixed NS	Dromiskin, Dundalk, Co. Louth
11	C.B.S Primary	Chapel Street, Dundalk, Co. Louth
12	Scoil Dairbhre Mixed	Readypenny, Dundalk, Co. Louth
13	SN Naomh Lorcan	OMeath, Dundalk, Co. Louth
14	SN San Nioclas	Nicholas St, Dundalk, Co. Louth
15	Faughart Community National School	Fraught, Dundalk, Co. Louth
16	SN N Maolmhaodhagh B	Anne Street, Dundalk, Co. Louth
17	SN An Tslanaitheora B	Ard Easmulnn Road, Dundalk, Co. Louth
17	St Joseph's NS	Tom Bellew Avenue, Dundalk, Co. Louth
18	Realt Na Mara School	Mill Street, Dundalk, Co. Louth
19	SN Mhuire	Muchgrange, Greenore, Louth, Co. Louth
20	SN Talamh na Manach	Talamh na Manach, Carlingford, Co. Louth
21	St Oliver's NS	Dundalk Street, Carlingford, Co. Louth
22	SN Rath Corr	Rathcor, Riverstown, Co. Louth
23	Mullaglass PS	8 Goragh Road, Newry, Co. Armagh
24	Dromintee PS	8 Ballynamadda Road, Killeavy, Newry, Co. Down
25	Jonesborough PS	54 Jonesborough Village, Newry, Co. Down
26	Killean PS	29 Killean School Road, Newry, Co. Down
27	Bessbrook PS	14 Church Road, Bessbrook, Newry, Co. Down
28	Grange PS	20 Lurganconary Road, Kilkeel, Newry, Co. Down
29	Ballyholland PS	60 Bettys Hill Road, Newry, Co. Down
30	Annalong PS	31 Kilkeel Road, Annalong, Newry, Co. Down
31	Killowen PS	88 Killowen Old Road, Rostrevor, Newry, Co. Down
32	Windsor Hill PS	Church Avenue, Newry, Co. Down
33	Bunscoil an Iuir	74 Kilmorey Street, Newry, Co. Down
34	St Patrick's PS	Ballinlare Gardens, Newry, Co. Down
35	Holy Cross PS	6 Attical Bog Road, Kilkeel, Newry, Co. Down
36	St Ronan's PS	Ashgrove Avenue, Newry, Co. Down
37	Kilbroney Integrated PS	15 Cloughmore Road, Rostrevor, Newry, Co. Down
38	St. Joesph's Convent PS	Edward Street, Newry, Co. Down
39	St. Clare's Abbey PS	12 Courtenay Hill, Newry, Co. Down
40	Iveagh PS	17 Castle Hill, Rathfriland, Newry, Co. Down
41	Newtowhamilton PS	8 School Road, Newtownhamilton, Newry, Co. Down
42	Clonalig PS	120 Concession Road, Crossmaglen, Newry, Co. Down
43	St Mary's PS	3 School Road, Barr, Jerrettspass, Newry, Co. Armagh
44	St. Laurence O'Toole PS	31 Main Street, Belleeks, Newry, Co. Down
45	St Joseph's PS	1 Seafin Road, Meigh, Killeavy, Newry, Co. Armagh
46	St Oliver's PS	2 Roxborough Road, Carrickrovaddy, Cullyhanna, Newry, Co. Down
47	St Oliver Plunkett PS	91 Main Street, Forkhill, Newry, Co. Down
48	St Michael's PS	86 Dundalk Street, Newtownhamilton, Newry, Co. Down

ORIEL WIND FARM PROJECT – POPULATION AND HUMAN HEALTH BASELINE INFORMATION

No.	Name	Address
49	St Brigid's PS	17 Carrowbane Road, Drumilly, Belleeks, Newry, Co. Down
50	St Brigid's PS	63 Glassdrummond Road, Crossmaglen, Newry, Co. Armagh
51	St Mary's PS	17 Maphoner Road, Mullaghbawn, Newry, Co. Armagh
52	St Patrick's PS	11 Tullynavall Road, Cullyhanna, Newry, Co. Armagh
53	St Moninna's PS	81 Chancellors Road, Cloughoge, Newry, Co. Down
54	St Patrick's PS	54 Carran Road, Crossmaglen, Newry, Co. Armagh
55	St Peter's PS	66 Derrymore Road, Cloughreagh, Bessbrook, Newry, Co. Down
56	St Joseph's PS	28 Convent Hill, Bessbrook, Newry, Co. Armagh
57	St Malachy's PS	11 Martins Lane, Carnagat, Newry, Co. Down
58	Poyntzpass PS	1 Tandragee Road, Poyntzpass, Newry, Co. Down
59	Dromore Road PS	Upper Dromore Road, Warrenpoint, Newry, Co. Down
60	St Dallan's PS	Clonallon Road, Warrenpoint, Newry, Co. Down
61	Cortamlet PS	19 Cortamlet Road, Altnamackin, Newtownhamilton, Co. Down
62	Kingsmills PS	63 Drumnahunshin Road, Whitecross, Armagh, Co. Armagh
63	Brackenagh West PS	22 Church Road, Kilkeel, Newry, Co. Down
64	Kilkeel PS	130 Harbour Road, Kilkeel, Newry, Co. Down
65	St Colman's PS	43 Sheeptown Road, Saval, Newry, Co. Down
66	St Columban's PS	127 Newcastle Road, Kilkeel, Newry, Co. Down
67	St Paul's PS	35 Ballykeel Road, Cabra, Newry, Co. Down
68	Gaelscoil na mBeann	127A Newcastle Road, Kilkeel, Newry, Co. Down
69	St Joseph's and St James's PS	34 Chapel Street, Poyntzpass, Newry, Co. Down
70	St Patrick's PS	13 Castlewellan Road, Ballymaghery, Hilltown, Newry, Co. Down
71	St Patrick's PS	40 Longstone Hill, Drumgreenagh, Rathfriland, Newry, Co. Down
72	St Patrick's PS	9 Chapel Hill, Mayobridge, Newry, Co. Down
73	St Malachy's PS	3 Chapel Road, Camlough, Newry, Co. Down
74	St Malachy's PS	4 Ballymoney Road, Kilcool, Newry, Co. Down
75	St Bronagh's PS	53 Church Street, Rostrevor, Newry, Co. Down
76	St Colman's PS	Greencastle Road, Kilkeel, Newry, Co. Down
77	Kilkeel PG	Kilkeel Leisure Centre, Mourne Esplanade, Kilkeel, Newry, Co Down
78	Kingdom PG	Dunnavil Road, Kilkeel, Newry, Co Down
79	Kilkeel High School	Knockchree Avenue, Kilkeel, Newry, Co Down
80	Kilkeel Nursery School	124 Harbour Road, Kilkeel, Newry, Co Down
81	Atticall PG	Atticall Community Centre, 140 Tullyframe Road, Kilkeel, Co Down
82	Brackenagh West PS	22 Church Road, Kilkeel, Newry, Co. Down
83	Annalong PS NU	31 Kilkeel Road, Annalong, Newry, Co Down
84	Dunnaman Children's Centre PG	St Colmans Primary School, 5 Greencastle Road, Kilkeel, Co Down
85	Spa PS	59 Ballymaglave Road, Ballynahinch, Co. Down
86	St Caolan's PS	7 Darragh Cross, Saintfield, Ballynahinch, Co. Down
87	Abercorn PS	Newry Road, Banbridge, Co. Down
88	Downpatrick PS	10 Mount Cresent, Downpatrick, Co. Down
89	Ballynahinch PS	Croob Park, Ballynahinch, Co. Down
90	Cumran PS	The Square, Clough, Downpatrick, Co. Down

ORIEL WIND FARM PROJECT – POPULATION AND HUMAN HEALTH BASELINE INFORMATION

No.	Name	Address
91	Derryboy PS	20 Manse Road, Crossgar, Downpatrick, Co. Down
92	Glasswater PS	6 John Street, Crossgar, Downpatrick, Co. Down
93	Newcastle PS	17A Shimna Road, Murlough Upper, Newcastle, Co. Down
94	St Patrick's PS	16 St Patrick's Road, Saul, Downpatrick, Co. Down
95	Carricks PS	61 Ballydesland Road, Burren, Warrenpoint, Co. Down
96	Christ the King PS	9 Drumsnade Road, Ballynahinch, Co. Down
97	Sacred Heart PS	27 Main Street, Dundrum, Newcastle, Co. Down
98	St Brigid's PS	Rathkeltair Road, Downpatrick, Co. Down
99	St Mary's PS	5 Aughlisnafin Road, Castlewellan, Co. Down
100	St Matthew's PS	27 Dolly's Brae, Magheramayo, Ballyward, Co. Down
101	Academy PS	194 Listooder Road, Saintfield, Ballynahinch, Co. Down
102	Annsborough Integrated PS	51 Ballylough Road, Castlewellan, Co. Down
103	Bunscoil Bheanna Boirche	Bunkers Hill, Castlewellan, Co. Down
104	Drumlins Integrated PS	18 Windmill Lane, Ballynahinch, Co. Down
105	Holy Family PS	1 Drumnaconagher Road, Downpatrick, Co. Down
106	St Macartan's PS	44 Loughisland Road, Downpatrick, Co Down
107	St Mary's PS	Sloane Crescent, Killyleagh, Downpatrick, Co. Down
108	St Nicholas PS	21 Downpatrick Road, Ardglass, Downpatrick, Co. Down
109	St Patrick's PS	30 Burrenreagh Road, Castlewellan, Co. Down
110	St Patrick's PS	167 Ballynoe Road, Legamaddy, Downpatrick, Co. Down
111	St Joseph's PS	25 Carnacaville Road, Newcastle, Co. Down
112	Killyleagh Integrated PS	12 Shrigley Road, Killyleagh, Downpatrick, Co. Down
113	St Colmcille's PS	Glebetown Drive, Downpatrick, Co. Down
114	St Francis PS	18 Chapel Lane, Drumaroad, Castlewellan, Co. Down
115	St Mary's PS	82 Strangford Road, Ardglass, Dunsford, Downpatrick, Co. Down
116	St Mary's PS	6 Closkelt Road, Dechomet, Ballyward, Castlewellan, Co. Down
117	St Mary's PS	31A Elmgrove Park, Newcastle, Co. Down
118	St Patrick's PS	38A Main Street, Ballynahinch, Co. Down
119	St Michael's PS	145 Rathfriland Road, Finnis, Dromara, Dromore, Co. Down
120	St Joseph's PS	24 Tyrella Road, Ballykinler, Downpatrick, Co. Down
121	All Children's Integrated PS	The Walled Garden, King Street, Newcastle, Co. Down
122	Cedar Integrated PS	29 Kilmore Road, Crossgar, Downpatrick, Co. Down
123	Our Lady & St Patrick PS	Edward Street, Downpatrick, Co. Down
124	St Joseph's PS	45 Ballycruttle Road, Downpatrick, Co. Down
125	St Joseph's PS	4 Ballynahinch Road, Crossgar, Downpatrick, Co. Down
126	St Joseph's PS	64 Main Street, Killough, Downpatrick, Co. Down
127	St Malachy's PS	8 Kilclief Road, Downpatrick, Co. Down
128	Bridge Integrated PS [Banbridge]	70 Ballygowan Road, Banbridge, Co. Down, BT32 3EL
129	Ballydown PS	64 Lisnaree Road, Banbridge, Co. Down, BT32 4JN
130	Annalong PS	31 Kilkeel Road, Annalong, Newry, Co. Down, BT34 4TH
131	Bunscoil Bheanna Boirche [Castlewellan]	Bunkers Hill, Castlewellan, Co. Down, BT31 9EB Bunkers Hill, Castlewellan, Co. Down, BT31 9EB
132	Gaelscoil na mBeann [Kilkeel]	127A Newcastle Road, Kilkeel, Newry, Co. Down, BT34 4NL

ORIEL WIND FARM PROJECT – POPULATION AND HUMAN HEALTH BASELINE INFORMATION

No.	Name	Address
133	The Drelincourt [Church of Ireland] [Armagh]	23 Ballynahone Avenue, Armagh, Co. Armagh, BT60 1EE
134	Bronte PS [Banbridge]	39 Ballinaskeagh Road, Milltown, Banbridge, Co. Down, BT32 5BL
135	Fair Hill Primary School	4 Tullinisky Rd, Dromara, Kinallen, Dromore BT25 2PJ, United Kingdom

Source: GOV.ie and EANI.

Table 5-4: Secondary schools within the Operational Local Population Study Area.

No.	Name	Address
1	St Marys College	St Marys Road, Dundalk, Co Louth
2	De La Salle College	Castleblayney Road, Dundalk. Co. Louth
3	St Vincent's Secondary School	Seatown Place, Dundalk, Co. Louth
4	St Louis Secondary School	Dun Lughaidh, Dundalk, Co. Louth
5	Dundalk Grammar School	The Crescent, Dundalk, Co. Louth
6	Bush Post Primary School	Riverstown, Dundalk, Co. Louth
7	Ó Fiaich College	Dublin Road, Dundalk, Co Louth
8	Coláiste Chú Chulainn	Lower Marshes, Dundalk, Co. Louth
9	Kilkeel High School	Knockchree Avenue, Kilkeel, Newry, Co. Down
10	St Louis Grammar School	151 Newry Road, Kilkeel, Newry, Co. Down
11	Newry High School	23 Ashgrove Road, Newry, Co Down
12	St Colman's College	Violet Hill, 46 Armagh Road, Newry, Co Down
13	Our Lady's Grammar School	Chequer Hill, Newry, Co Down
14	St Marys High School	Upper Chapel Street, Newry, Co Down
15	Sacred Heart Grammar School	10 Ashgrove Avenue, Newry, Co Down
16	Abbey Christian Brother Grammar	77A Ashgrove Road, Newry, Co. Down
17	St Joseph's Boys High School	20 Armagh Road, Newry, Co Down
18	Newtownhamilton High School	9 Armagh Road, Newtownhamilton, Newry, Co Down
19	St Joseph's High School	77 Dundalk Road, Crossmaglen, Newry, Co Armagh
20	St Paul's High School	108 Camlough Road, Bessbrook, Newry, Co. Down
21	Rathfriland High School	76 Newry Street, Rathfriland, Newry, Co Down
22	St Mark's High School	Upper Dromore Road, Warrenpoint, Newry, Co Down
23	Banbridge Academy	3 Lurgan Road, Banbridge, Co Down, BT32 4AQ
24	Banbridge High School	69A Primrose Gardens, Banbridge, Co Down, BT32 3EW
25	Tandragee Junior High School	Armagh Road, Tandragee, Co. Armagh, BT62 2AY

Source: GOV.ie and EANI.

Table 5-5: Sports facilities within the Construction Local Population Study Area.

No.	Name	Address
1	Hunterstown Rovers	Hunterstown Rovers GAA Club, Hunterstown, Ardee, Co. Louth
2	John Mitchels GFC	John Mitchels GFC, Ballybailie, Co. Louth
3	Ardee Celtic FC	Townparks, Ardee, Co. Louth
4	Ardee Golf Club	Townparks, Carrick Rd, Cappocksgreen, Ardee, Co. Louth

ORIEL WIND FARM PROJECT – POPULATION AND HUMAN HEALTH BASELINE INFORMATION

No.	Name	Address
5	Ardee & District Athletics Club	Drogheda Road, Ardee, Co. Louth
6	St Marys Gaa Club	Drogheda Rd, Mullameelan, Ardee, Co. Louth
7	Johm Mitchels Gaa Club	Dowdstown, Co. Louth
8	Sean McDermotts Gaa Club	Louth Hall, Mountrush, Ardee, Co. Louth
9	Square Utd AFC	Boys School Field, Ardee, Co. Louth
10	Ardee Rugby Club	Townspark House, Townparks, Ardee, Co. Louth
11	Ardee Golf Club	Townparks, Carrick Rd, Cappocksgreen, Ardee, Co. Louth, A92 Y6P7
12	Ardee Boxing Club	Mulladrillen, Ardee, Co. Louth
13	Stabannon Parnells Gaa Club	Stabannon, Castlebellingham, Co. Louth
14	Lann Leire Gaa Club	Shamrock Hill, Ravel, Dunleer, Co. Louth
15	Dromin United Football Club	Dromin, Co. Louth
16	Dunleer AC Club Rooms	Pairc Ui Mhuiri, Shamrockhill, Dunleer, Co. Louth

Source: Google Maps.

Table 5-6: Childcare Facilities within the Construction Local Population Study Area.

No.	Name	Address
1	Stabannon & District Community Pre School	Stabannon Community Hall, Stabannon Castlebellingham, Co.Louth
2	Pebble Beach Playschool	The Malthouse, Main Street, Castlebellingham, Co.Louth
3	Tír na nÓg Montessori PreSchool	Cluide, Drumcar Road, Dunleer, Co. Louth
4	Philipstown Early Childcare	Stifyans Cross, Philipstown, Dunleer, Co. Louth
5	Little & Big Rascals	Ardee Road, Dunleer, Co. Louth
6	Naíonra Oiriall	10 The Forge, Dunleer, Co. Louth
7	Stabannon & District Community Pre School	Stabannon Community Hall, Stabannon, Castlebellingham, Co. Louth
8	Pebble Beach Playschool	The Malthouse, Main Street, Castlebellingham, Co. Louth
9	Aladdin's Cave Montessori School and Crèche	Stoney Lane, Ardee, Co. Louth
10	Ballapousta Early Learning School	Ballapousta, Smarmore, Ardee, Co. Louth
11	Cheeky Monkey Montessori School & After School Club	Ardee Parish Centre, Hale Street, Ardee, Co. Louth
12	Kidz Cottage Montessori School	Yellow House, 2 Carrick Road, Ardee, Co. Louth
13	Shining Stars PreSchool	5 Cherrybrook, Ardee, Co. Louth
14	Toddlers' Hill Creche & Montessori	54 Moorehall Rise, Ardee, Co. Louth
15	Venessa's Little Legends	The Blackridge, Ardee, Co. Louth

Source: Gov.ie

Table 5-7: Primary schools within the Construction Local Population Study Area.

No.	Name	Address
1	SN Chill Sarain	Kilsaran, Castlebellingham, Co. Louth
2	SN San Nioclas	Tigh Banan, Castlebellingham, Co. Louth
3	SN Tigh an Lubhair	Tenure, Dunleer, Co. Louth
4	Dromin NS	Dromin, Dunleer, Co. Louth

ORIEL WIND FARM PROJECT – POPULATION AND HUMAN HEALTH BASELINE INFORMATION

No.	Name	Address
5	SN Naomh Fhionain	Dillonstown, Dunleer, Co. Louth
6	SN Chaoimhin Naofa	Philipstown, Dunleer, Co. Louth
7	Ardee Monastery	Drogheda Road, Ardee, Co. Louth
8	SN Mhuire na Trocaire	Hale Street Ardee, Co. Louth
9	Scoil Bhríde Mixed NS	Lann Leire, Ardee Road, Co. Louth
10	Ardee Educate Together NS	Dundalk Road, Ardee, Co. Louth
11	Ballapousta NS	Ballapousta, Ardee, Co. Louth
12	Newtown NS	Newtown, Ardee, Co. Louth

Source: Gov.ie.

Table 5-8: Secondary schools within the Construction Local Population Study Area.

No.	Name	Address
1	Scoil Uí Mhuiri	Barn Road, Dunleer, Co. Louth
2	Ardee Community School	Ardee, Co. Louth

Source: Gov.ie.

Table 5-9: Hospitals within the Wider Population Study Area.

No.	Name	Address
1	Daisy Hill Hospital	5 Hospital Rd, Newry BT35 8DR, United Kingdom
2	Our Lady of Lourdes Hospital	Windmill Rd, Moneymore, Drogheda, Co. Louth, A92 VW28
3	Our Lady's Hospital	Moathill, Navan, Co. Meath
4	Mater Private Navan Clinic	Convent Rd, Athlumney, Navan, Co. Meath
5	Mater Private Drogheda	Cross Ln, Moneymore, Drogheda, Co. Louth
6	St Brigid's Hospital	Saint Brigid's Complex, Kells Road, Ardee, Co. Louth, A92 DRN0
7	Louth County Hospital	Dublin Rd, Priorland, Dundalk, Co. Louth, A91 E671
8	St. Marys Hospital	Dublin Rd, Bryanstown, Drogheda, Co. Louth
9	Downe Hospital	2 Struell Wells Rd, Downpatrick
10	Downshire Hospital	53 Ardglass Rd, Downpatrick

Source: Google Maps.